



TARKINGTON PARK MASTER PLAN

an urban park with a distinctive sense of place that celebrates the community's diverse history and culture, attracts a wide variety of users, and provides a unique park experience

Prepared By:



November 20, 2012



City of Indianapolis Office of the Mayor

Honorable Gregory A. Ballard, Mayor
 Mark Warner, Mayor's Neighborhood Liaison, North Outer Region

City-County Council and Districts

Maggie Lewis, Council President and District 7	Michael McQuillen, District 12
John Barth, At Large	Robert Lutz, District 13
LeRoy Robinson, At Large	Marilyn Pfisterer, District 14
Pamela Hickman, At Large	Vop Osili, District 15
Zack Adamson, At Large	Brian Mahern, District 16
Jose Evans, District 1	Mary Moriarty Adams, District 17
Angela Mansfield, District 2	Vernon Brown, District 18
Will Gooden, District 3	Jeff Miller, District 19
Christine Scales, District 4	Frank Mascari, District 20
Virginia Cain, District 5	Benjamin Hunter, District 21
Janice McHenry, District 6	Jason Holliday, District 22
Monroe Gray, Jr., District 8	Jeffrey Cardwell, District 23
Joseph Simpson, District 9	Jack Sandlin, District 24
William Oliver, District 10	Aaron Freeman, District 25
Steve Talley, District 11	

City-County Council Parks Committee

William Oliver, Chair
 Monroe Gray
 John Barth
 Jason Holliday
 Janice McHenry
 Vop Osili
 Christine Scales
 Joseph Simpson

Board of Parks and Recreation

Director John Williams, Chair
 Dr. Jacqueline Greenwood
 Dr. Michael Twyman
 Joseph Wynns
 Joshua Bowling

Department of Parks and Recreation

John Williams, Director
 Don Colvin, Deputy Director
 Jennifer Pittman, Deputy Director
 Andre Denman, Principal Park Planner
 Benjamin Jackson, Senior Park Planner
 Maureen Faul, Public Information Officer

Metropolitan Development Commission:

William Selm
 Dorothy J. Jones
 Bruce Schumacher
 Diana Hamilton
 Lena Hackett
 Tim Ping
 Jess Lynch
 Ed Mahern
 Charles Eberhardt

Department of Economic Development

Deron Kintner, Director
 Kris Butler, Deputy Director

Department of Public Works

Lori Miser, Director
 Nathan Sheets, Senior Project Manager
 Andy Lutz, Chief Engineer

Department of Metropolitan Planning

Adam Thies, Director
 Kathleen Blackham, Senior Planner

Department of Public Safety

Troy Riggs, Director
 Dale Braun, IMPD Lieutenant - North District

Client Coordination Team:

John Williams, Director of Indy Parks
 Don Colvin, Deputy Director of Indy Parks
 Andre Denman, Principal Park Planner
 Benjamin Jackson, Senior Park Planner
 Kris Butler, Deputy Director of Economic Development

Lead Design Consultant and Landscape Architect:

Rundell Ernstberger Associates
 618 E. Market Street
 Indianapolis, Indiana 46202
 T: 317.263.0127
 W: reasite.com

Architecture Consultant:

AXIS Architecture + Interiors
 618 E. Market Street
 Indianapolis, Indiana 46202
 T: 317.264.8162
 W: axisarch.com





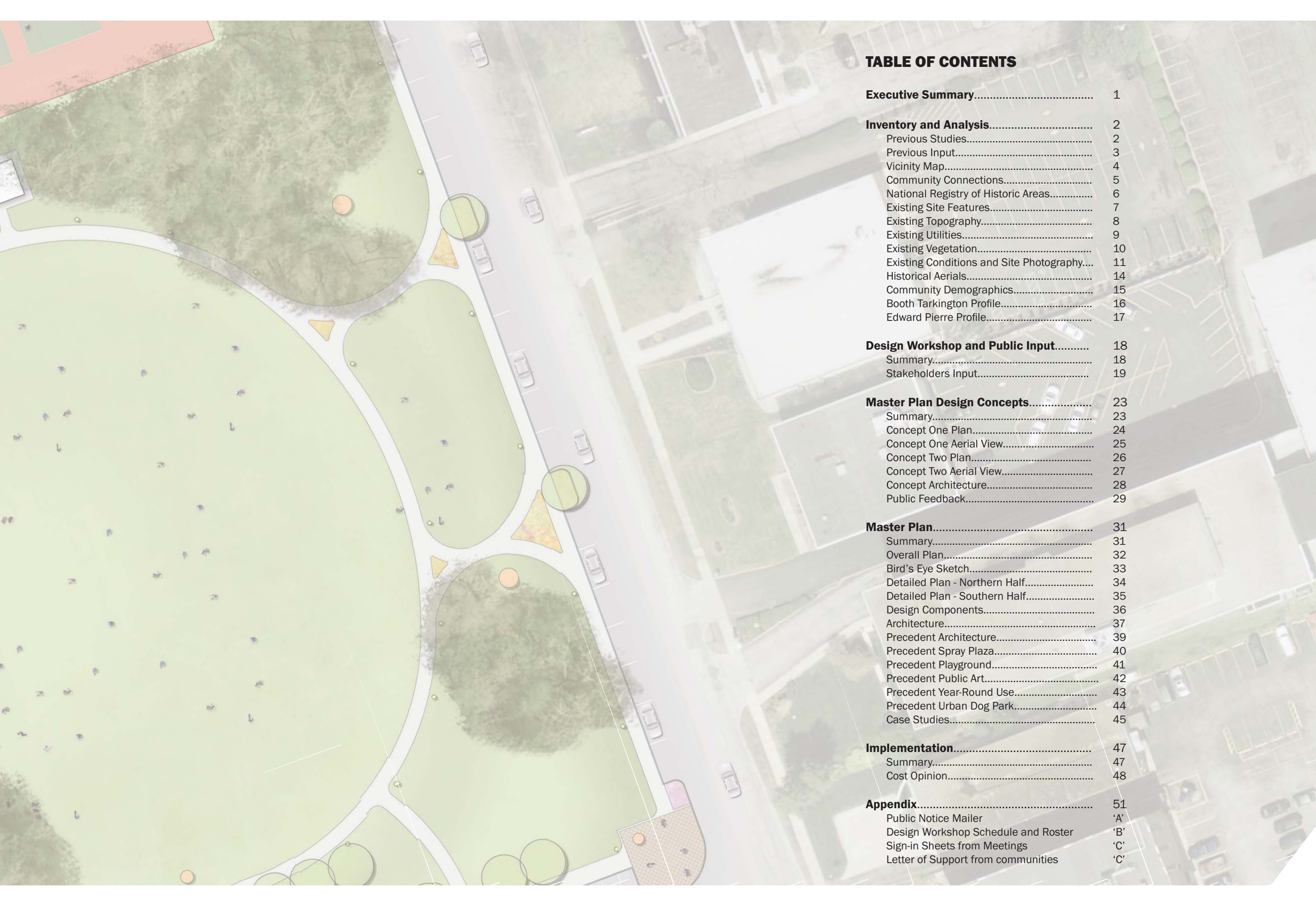


TABLE OF CONTENTS

Executive Summary	1
Inventory and Analysis	2
Previous Studies.....	2
Previous Input.....	3
Vicinity Map.....	4
Community Connections.....	5
National Registry of Historic Areas.....	6
Existing Site Features.....	7
Existing Topography.....	8
Existing Utilities.....	9
Existing Vegetation.....	10
Existing Conditions and Site Photography....	11
Historical Aerials.....	14
Community Demographics.....	15
Booth Tarkington Profile.....	16
Edward Pierre Profile.....	17
Design Workshop and Public Input	18
Summary.....	18
Stakeholders Input.....	19
Master Plan Design Concepts	23
Summary.....	23
Concept One Plan.....	24
Concept One Aerial View.....	25
Concept Two Plan.....	26
Concept Two Aerial View.....	27
Concept Architecture.....	28
Public Feedback.....	29
Master Plan	31
Summary.....	31
Overall Plan.....	32
Bird's Eye Sketch.....	33
Detailed Plan - Northern Half.....	34
Detailed Plan - Southern Half.....	35
Design Components.....	36
Architecture.....	37
Precedent Architecture.....	39
Precedent Spray Plaza.....	40
Precedent Playground.....	41
Precedent Public Art.....	42
Precedent Year-Round Use.....	43
Precedent Urban Dog Park.....	44
Case Studies.....	45
Implementation	47
Summary.....	47
Cost Opinion.....	48
Appendix	51
Public Notice Mailer	'A'
Design Workshop Schedule and Roster	'B'
Sign-in Sheets from Meetings	'C'
Letter of Support from communities	'C'

EXECUTIVE SUMMARY

Tarkington Park is a 10.5 acre city park located in the Butler-Tarkington Neighborhood, just north of historic Maple Road (38th Street) at 45 East 40th Street on the north side of Indianapolis. Bounded by Meridian Street, Illinois Street, 39th and 40th Streets, the park is surrounded by diverse, unique and historic neighborhoods with highly engaged community organizations.

Since the completion of a master plan in 1985 by Indy Parks, there has been a growing interest in what the park could become. Most recently, Midtown Indy Inc., led a series of visioning sessions in 2010 which included the development of conceptual ideas for the park. In 2011, a tennis shelter in the park was demolished due to its highly deteriorated condition; the shelter was designed by renowned local architect Edward and its removal sparked a great deal of community outcry. With this renewed interest in the park, Indy Parks decided that a new master plan was needed to give residents the opportunity to define the future for Tarkington Park.

In the spring of 2012, Indy Parks, along with their consultant team of Rundell Ernstberger Associates (Landscape Architecture + Urban Design) and Axis Architecture, began a master planning process in partnership with the community to formally update the 1985 Indy Parks Master Plan for Tarkington Park. The resulting master plan defines a collective vision for the future redevelopment of Tarkington as one of the City's premier urban parks, providing a blueprint for the implementation of the community's desired park improvements by a public-private coalition comprised of the City of Indianapolis, Indy Parks, and neighborhood organizations, who see the park as the catalyst for the revitalization of the surrounding area.

The Design Process

The master planning began with a comprehensive inventory and analysis of the community, the existing park features, previous and current studies and initiatives in the area, and the opportunities and constraints for redevelopment of the park. Informed with the inventory and analysis information, Indy Parks and REA/Axis facilitated a multiple-day community workshop in the summer of 2012 to engage the community, key stakeholders, surrounding residents and businesses, municipal departments, interested organizations, and the general public in crafting a vision for the future of Tarkington Park.

The design workshop began with a series of listening sessions to determine the community's needs and desires for the park. The master planning team then synthesized the community's input into a program of major themes and design elements for the redesign of the park. Over the course of the following three days, the design team, working closely with Indy Parks staff, developed two separate design concepts for the park. On the fourth day, the concepts, along with supporting plans, sketches, and imagery, were presented to the community at a public forum to complete the workshop. At the meeting, community members were invited to review and respond to the proposed conceptual design, which was also posted to the project website for review and input. Following the workshop, additional meetings were held with community groups to allow for further comment and input on the conceptual alternatives.

After a four week comment period, the master planning team synthesized the public comments from emails, phone conversations, letters, website comments and meetings to assist in determining the conceptual direction for the final park master plan. A draft master plan was then presented in a public meeting and posted on the website for additional public comments. At the conclusion of the public input period, additional comments were addressed and the master plan was finalized.

The Plan

The Tarkington Park Master Plan establishes a vision for a vibrant urban park with a distinctive sense of place that celebrates the community's diverse history and culture, attracts a wide variety of users, and provides a unique park experience.

Combining preferred features identified and supported by the community from preliminary design concepts into one cohesive design, the proposed master seeks to define a new model for an urban park in the Indy Parks system – a park that celebrates urban living and catalyzes revitalization and economic development within the surrounding community.

It is understood that this master plan can only be realized through a collaborative public/private partnership model. Beyond the funding of design and construction of the new park, it will be critical that a plan is established for the continued park programming and operations to ensure a level of management and maintenance consistent with the community's vision for the park. Based on case studies from similar communities across the country, Indy Parks believes that a partnership with a community organization whose sole focus is the programming and operation of the park would ensure the park's continued success.



Excerpts from
Indy Parks 1985 Master Plan



Midtown Indianapolis Inc. 2010 Plan

Past Studies Summary

The last master plan completed by Indy Park for Tarkington Park was in 1985. Though the existing park has not changed significantly in the intervening years, the surrounding community has continued to evolve with renewed interest in the park. While certain features of Tarkington Park appear to be well used by the surrounding community, it is often referred to as underutilized as a whole and in need of long overdue upgrades to meet the area’s growing recreational needs.

In 2010, Midtown Indianapolis Inc., in partnership with the Department of Metropolitan Development, hosted a series of visioning sessions for the area. Tarkington Park was the focus of one of these sessions. Midtown received a great deal of community input and engaged a consultant to prepare a “vision plan” for Tarkington Park (above) based on this input. This plan was not formally reviewed or adopted by Indy Parks, but the ideas generated served as a basis, in part, for Indy Park’s decision to update the park master plan.

Midtown Indianapolis Inc. Gathered Comments

In your “environment,” what activities could happen there: What is the park designed to accomplish?

- Green space is an asset
- Splash pad
- Youth activities
- Need to ask apartment residents
- Dog park
- Urban respite
- Stimulate neighborhood activity
- Universal “3rd place”
- Support private/public programs
- Outdoor rooms that are furnished
- Shelter/shade
- Private/semi-private
- Public separated by grade/elevation changes
- The mid-block connection and gateway
- Work with farmer’s market

As you walk through the park, what should be your ideal experience?

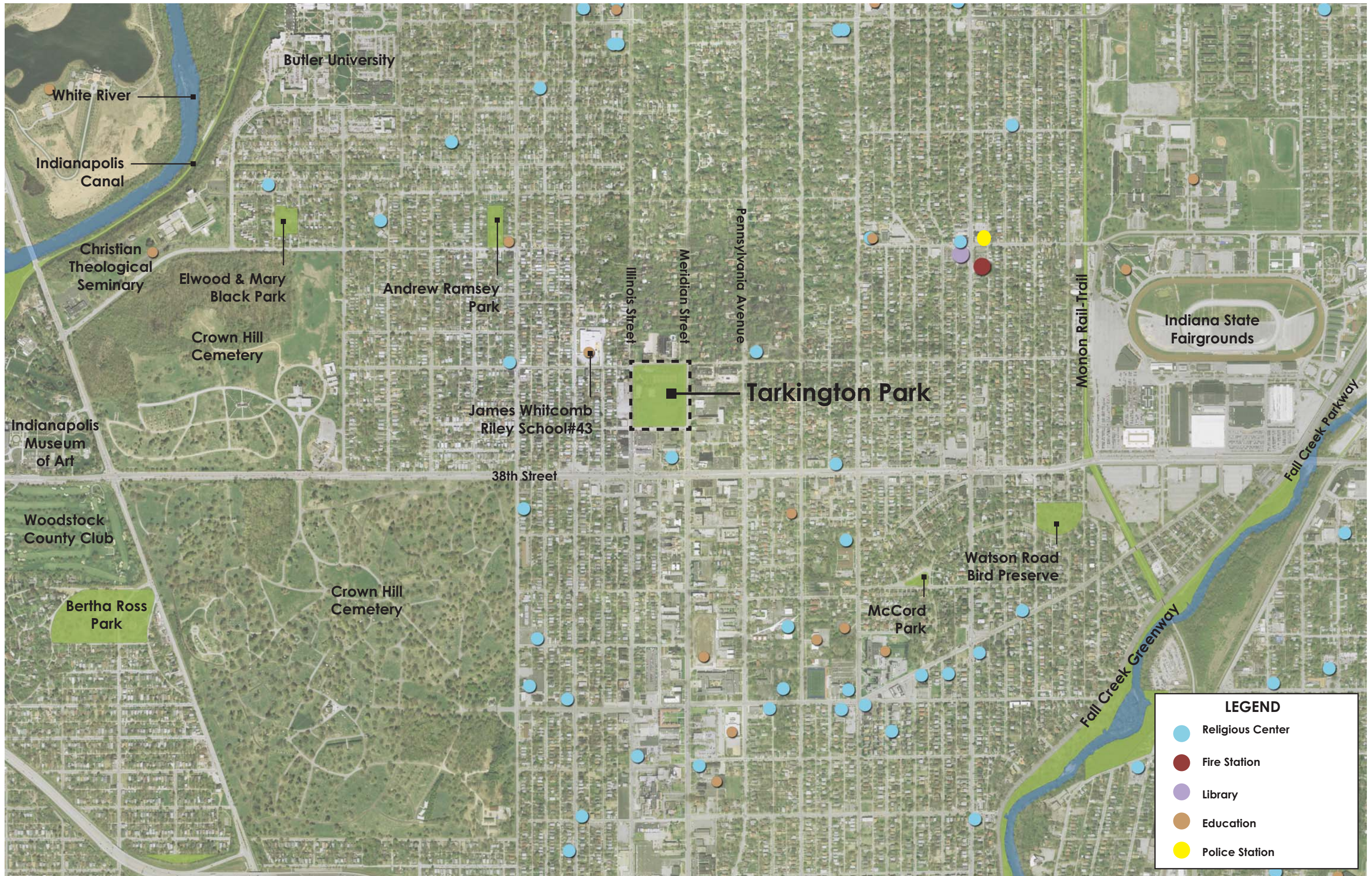
- More inviting
- Public art
- Meander - different pathways and destinations
- Security
- Place for shade/protection
- Family-oriented
- Music, events, farmer’s market
- Related to the context - enhance the neighborhood
- Good lighting
- Neighborhood park, not regional draw
- Active parts of park are very important to keep
- Pavilion and playground used often
- Basketball used more; tennis used less
- Frisbee
- Shakespeare in the Park
- Playground
- Pick-up basketball
- Passive - sit&chat/read
- Balance of active/passive

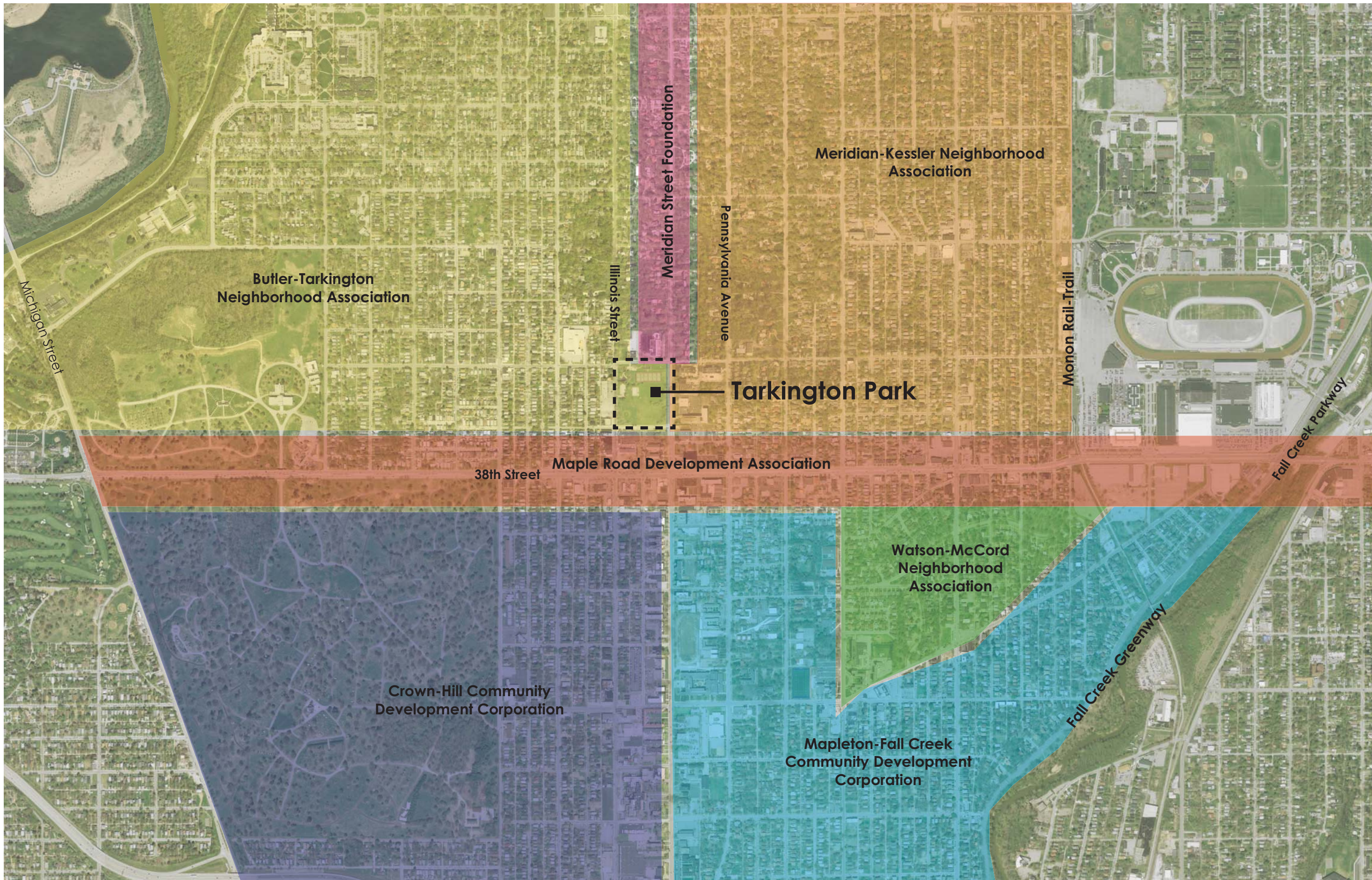
How could the park encourage the surrounding area “mixed use” ideas that have been previously recommended by the groups? How could the park help an expanded residential business district thrive?

- Tennis courts
- Create a gateway
- Park may not a factor
- Needs to be hot spot - a celebration
- Establish it as a civic place with flexible space
- Symphony in the park or similar venue
- Phase use for entrances
- The “front porch” for all the businesses from 38th & 40th Streets
- Connect with 38th & 40th Street - see views from 38th Street
- Expand perception of boundary to include MLK Center and church
- Utilize 39th & 40th Streets as part of park - new brick paving - close them down for events
- MLK Center and church are community anchors in/for the park
- Create lush garden edges and park “rooms.” furnished with urban elements
- A commercial/dining experience in the park to generate activity - Bryant Park, NYC
- Meridian and Illinois architecture from 38th _40th Streets should complement the park
- Neighborhood park - minimize parking
- Create outdoor rooms in park so that people have destinations and reasons to walk and meet with people

Other ideas:

- Skate park
- Great, feel good relationship with multi-service center
- Possibly replicate 38th Street median work to help brand the park
- Poetry reading area
- Reading theme based on area I Booth- Tarkington | Indiana history Booth Tarkington - author
- Carve seating into side of berms
- Ask tennis pros by Illinois Street Emporium
- Think about limited access on 40th and 39th Streets • Tree and flower planting
- Impact fee for developers
- “Central Park” for 38th Street, along with Community Center
- Green Space advisory group
- Turn vacant lots into community gardens and pocket parks
- IMA partnership to have rotating art/sculpture program
- Landscaping contest for landscaping contractors





Butler-Tarkington
Neighborhood Association

Meridian-Kessler Neighborhood
Association

Meridian Street Foundation

Pennsylvania Avenue

Illinois Street

Tarkington Park

Monon Rail-Trail

Fall Creek Parkway

38th Street
Maple Road Development Association

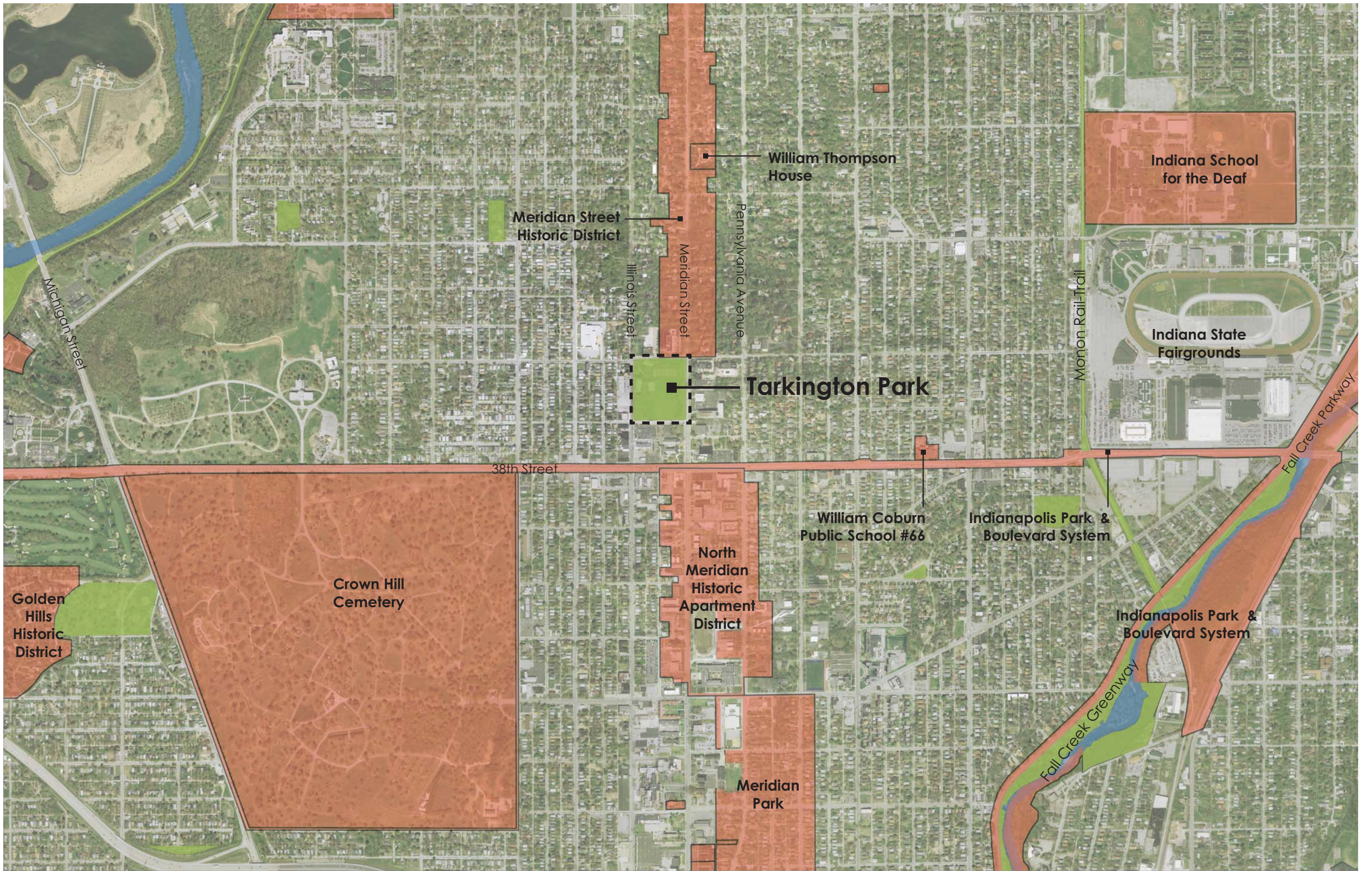
Watson-McCord
Neighborhood
Association

Crown-Hill Community
Development Corporation

Mapleton-Fall Creek
Community Development
Corporation

Fall Creek Greenway

Michigan Street





Martin Luther King
Community Center

Tarkington Tower

40th Street

Picnic
Shelter

Parking
(22 Spaces)

Former
Tennis Shelter
Location

Multi-Age
Playground

Resurfaced Tennis Courts

Tree
Grove

Parking
(26 Spaces)

Basketball
Court

Large
Hill top

Commercial
Strip

40 North Tower

Nuvo

Tarkington Park

Open Grass
Field

Shade Tree Plantings
& Berm

Meridian Street

United
Way

Former
Baseball
Diamond

Shade Tree Plantings

39th Street

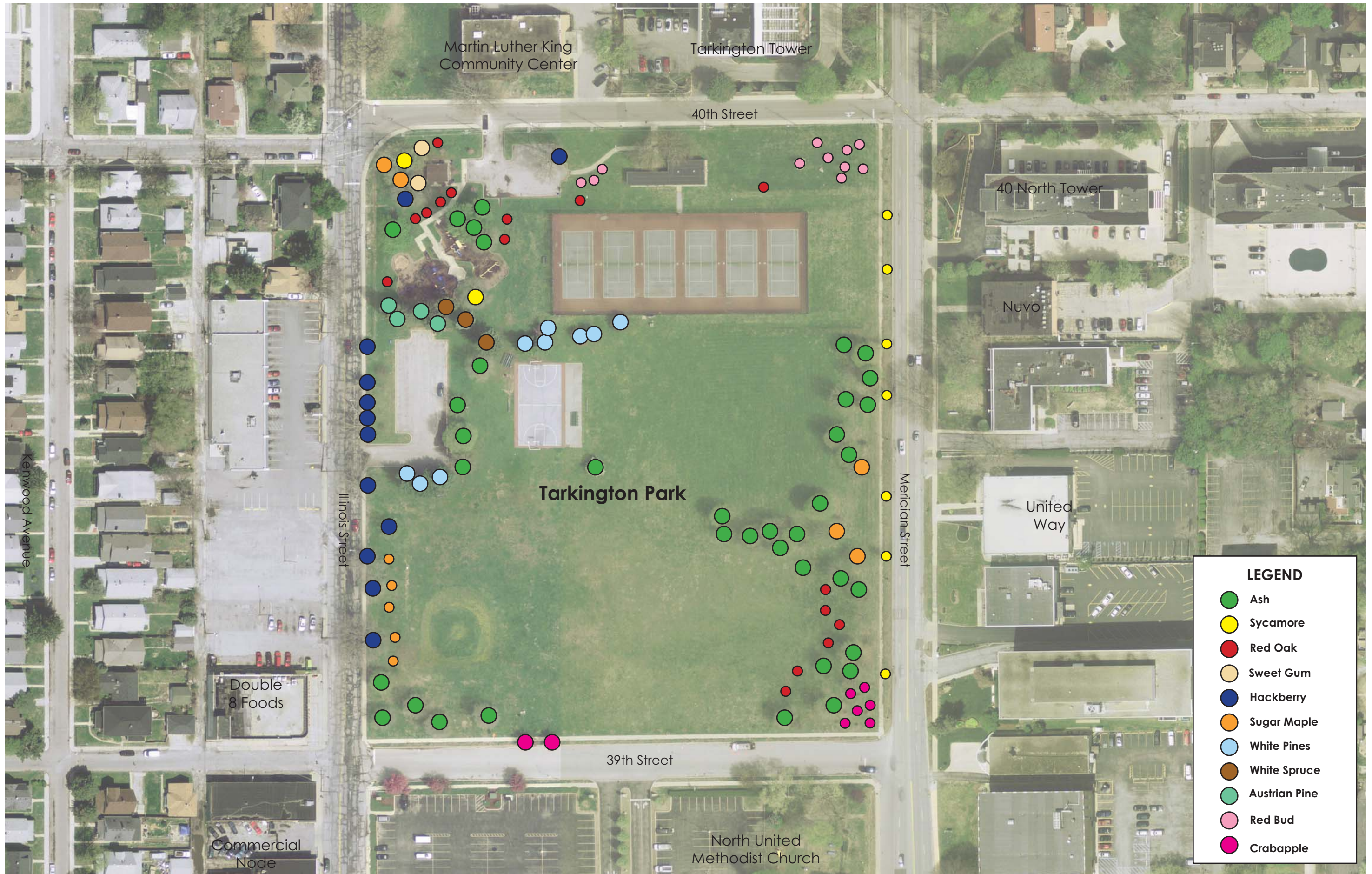
Double
8 Foods

Commercial
Node

North United
Methodist Church









Looking Northeast into the park on 39th Street

- Ash Trees - Emerald Ash Borers
- Existing lighting along perimeter
- Wide road with non-regular use except for church events and farmer's market



Looking North from the southwest corner

- Ash Trees - Emerald Ash Borers
- Remnants of a baseball diamond
- Average to quality turf conditions



Looking North from the southeast corner

- Ash Trees - Emerald Ash Borers
- Recent shade tree plantings
- Berms give enclosure and hide views into the park along Meridian Street



Looking South at 39th St. & Meridian St.

- Non-ADA crosswalks
- Intimidating traffic patterns for pedestrian crossings



Looking Northwest at 39th St. & Meridian St.

- Ash Trees - Emerald Ash Borers
- Existing street light fixtures along Meridian St.
- Berms hide views into park
- No park signage



Looking North along Meridian St.

- Ash Trees - Emerald Ash Borers
- Recent ornamental tree plantings
- Recent street tree plantings
- Berms give enclosure and hide views into the park along Meridian St.



Looking Southwest from 40th St. & Meridian St.

- Non-ADA crosswalks
- Intimidating traffic patterns for pedestrian connections
- Yellow flashing signal
- No park signage



Looking west along 40th Street

- Unsightly utility lines
- Vicinity of demolished Edward Pierre tennis shelter location
- Recent ornamental tree plantings



Looking Southeast from Tarkington Tower

- Resurfaced tennis courts
- Former location of Edward Pierre Tennis Shelter Building



Looking Southwest from Park High Point

- Ash Trees - Emerald Ash Borers
- Good elevated views of park
- Large open grass space good for flexible programming



Dedication Plaque

- Located in the northeast corner of the park



Looking Northeast in the northwest corner of the park

- Existing 40th St. parking area needs resurfacing
- Playground is pre-2010 ADA Guidelines
- Mature trees - some are Ash



Existing Playground

- Playground is pre- 2010 ADA Guidelines
- Existing vandalism
- Faded, chipped and peeling paint



Looking southeast from 40th Street

- Existing picnic shelter undersized
- Unsightly utility lines



Looking South at 40th St. & Illinois St.

- ADA crosswalks
- Wide intersection crossings
- Intimidating traffic patterns for pedestrian connections
- Bike lane
- No park signage



Looking south along Illinois Street

- Recently updated ADA ramps
- Rusty chain link fence



Looking West From 40 North Tower



Looking Northwest From City View Tower



Looking South from Tarkington Tower



Basketball Court & Former Baseball Diamond Location



Former Edward Pierre Tennis Shelter Location & View of the 40th Street Corridor



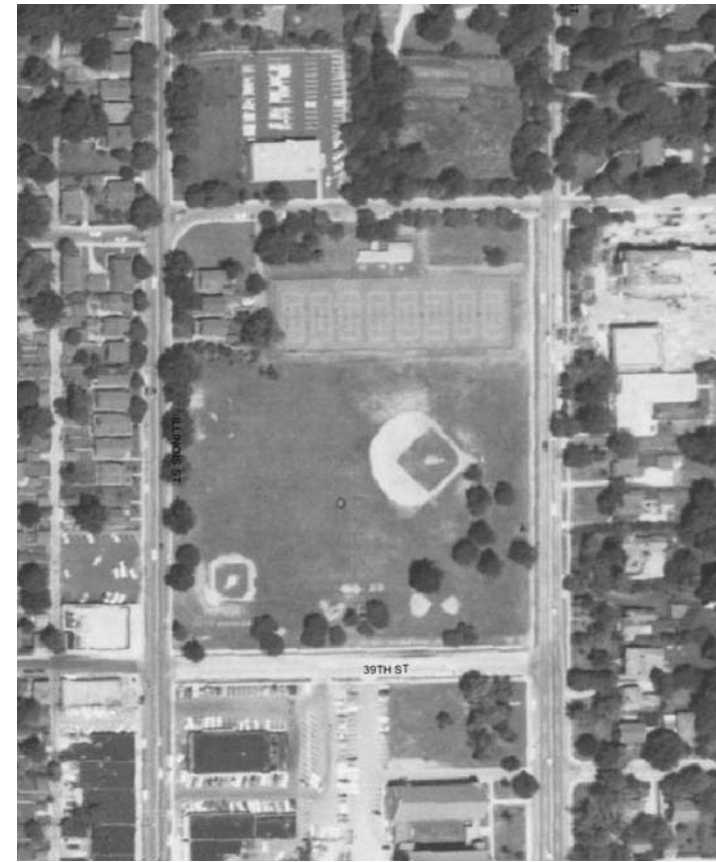
Looking Southwest at the Meridian Street Corridor



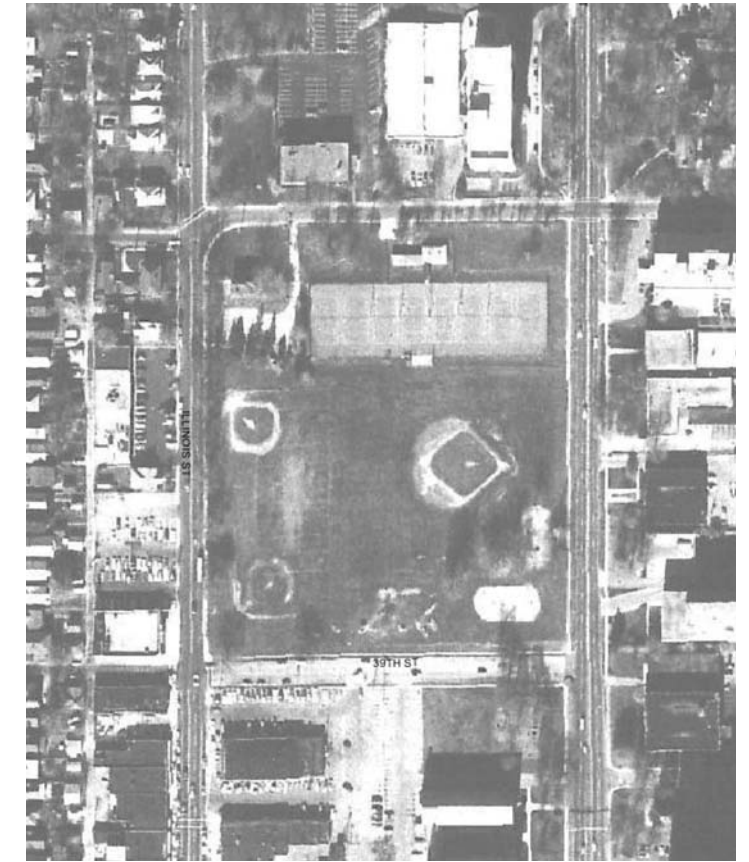
1937



1956



1961



1976



1986



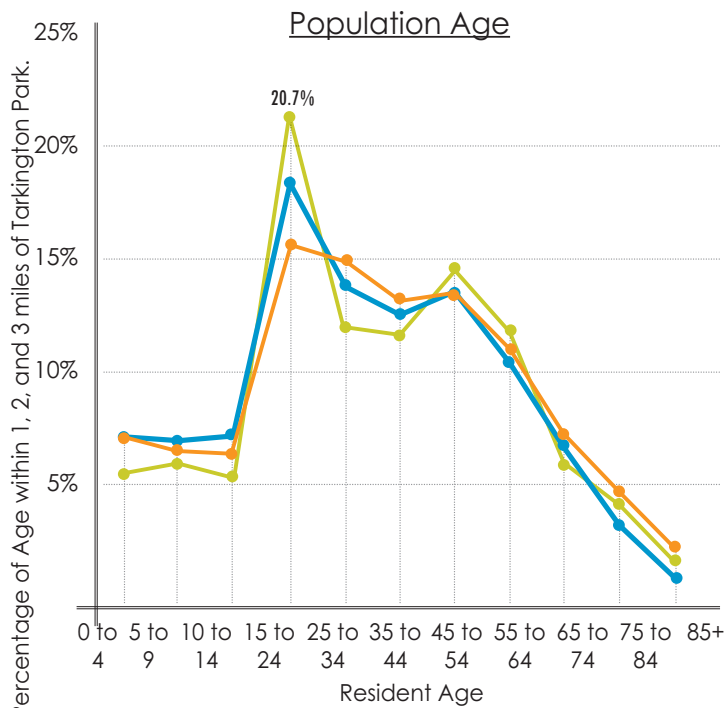
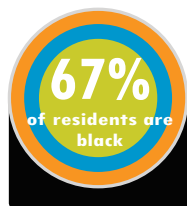
1995



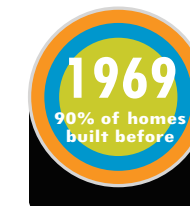
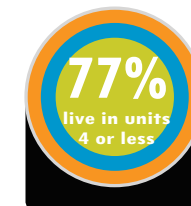
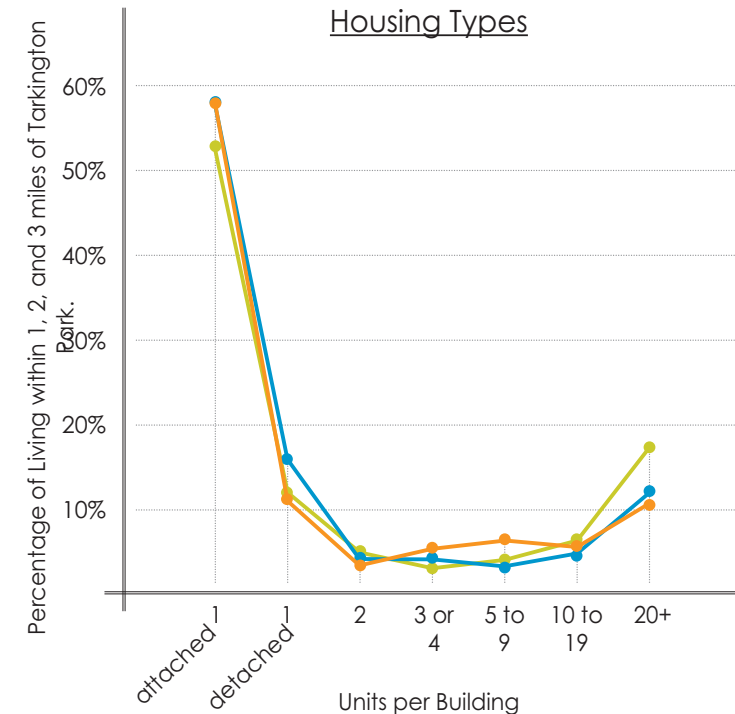
2002



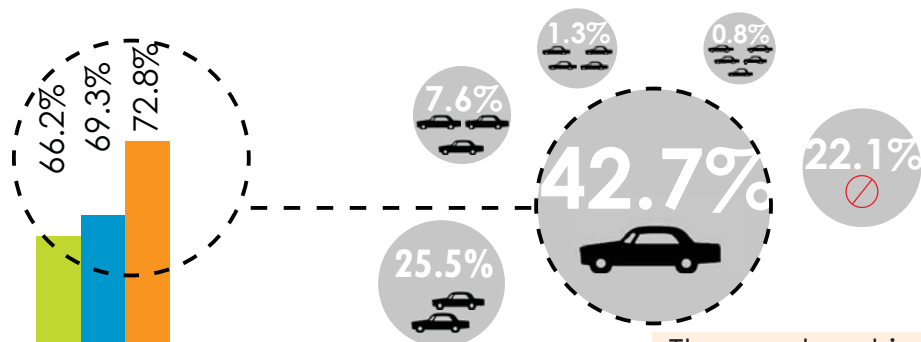
2010



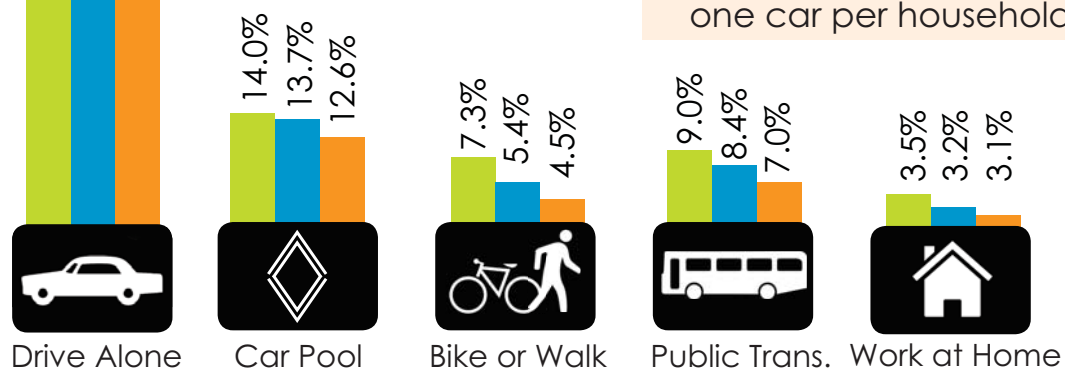
The median age is 33.4 and nearly half the surrounding population is 35 or younger.



The majority of housing types near Tarkington Park are single unit homes built before 1969. 20+ unit apartments are 2nd most common.



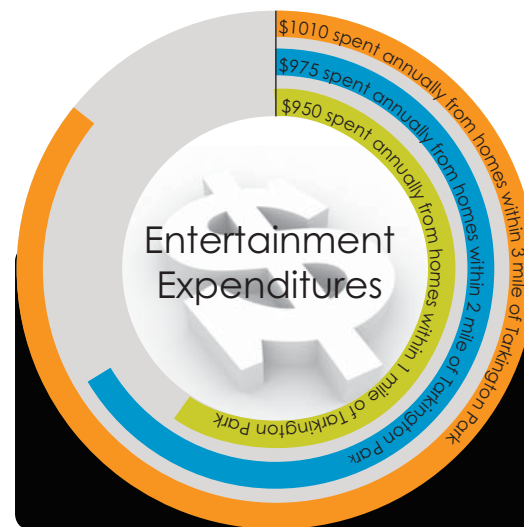
Those who drive or carpool to work on average own one car per household.



Transportation Modes to Work

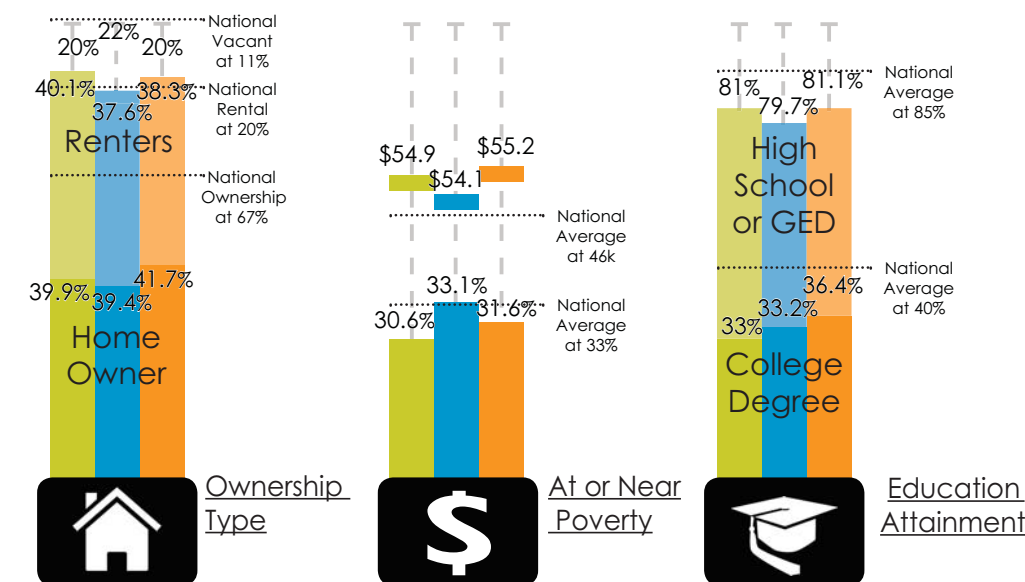
Those who live closer to Tarkington Park drive alone less, and carpool and use alternative transportation types more than those who live within 2 or 3 miles from the park.

Study area shown within 1, 2, and 3 mile radius from Tarkington Park.



Cost of Entertainment

Those who live closer to Tarkington Park spend slightly less on entertainment every year.



The study area is a split between rental and ownership households. Further, 1 out of 3 live near poverty but 80% graduated high school.

Newton Booth Tarkington

(July 29, 1869 – May 19, 1946)



Born in Indianapolis to a family of moderate wealth and with important political connections, Booth Tarkington is best remembered for his two Pulitzer Prize-winning novels, *The Magnificent Ambersons* and *Alice Adams*. Having started writing plays and short stories at an early age, he continued his writing into adulthood, eventually becoming one of the most popular American novelists of his time. His published works include over 50 novels, plays, essays and short stories. Many of his novels have been adapted for the stage and screen, including *The Flirt* and *Seventeen*, both originally published as serials in popular magazines. His first novel, *The Gentleman from Indiana*, was also published in installments before eventually being reprinted and translated into six languages. Two of his novels were annual best-sellers nine times, and *The Magnificent Ambersons* (the second book of his *Growth* trilogy) was named one of the 100 best English-language novels of the 20th century.



Through the *Growth* trilogy (*The Turmoil*, *The Magnificent Ambersons*, and *The Midlander*), Tarkington portrays the changes that occurred in the American social landscape between the Civil War and World War I, a period of rapid industrialization. The declining fortune of the aristocratic Amberson family is contrasted with the “new money” of the industrial tycoons.

Believable characters and a focus on typical middle-class families were the result of a shift in Tarkington’s writing from romance to realism. His stories depicted people and society as they really were, often dealing with the foibles of the American class system. The comical adventures of young Penrod Schofield in the *Penrod* novels, were based on the antics of Tarkington’s nephews and his own boyhood memories.

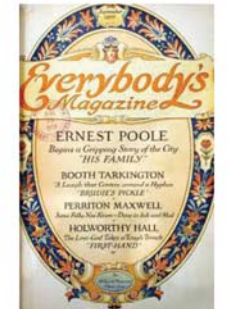
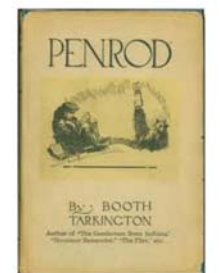
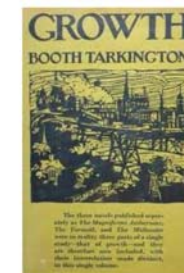
Small towns in Indiana were the setting for many of his novels. Woodruff Place, the Indianapolis neighborhood where he once lived, was the inspiration for *The Magnificent Ambersons*. Designed to provide residents with a park-like setting, the affluent neighborhood began to experience a gradual decline in the late 1910s as a result of increased automobile use. Tarkington’s forward-thinking on the impact of automobiles upon society was expressed through the dialogue of characters in the novel: **“But automobiles have come, and they bring a greater change in our life than most of us suspect. They are here, and almost all outward things are going to be different because of what they bring.”** (*The Magnificent Ambersons*, p. 137)

“...in the matter of human character the people of such an out-of-the-way midland village were as estimable as any others anywhere...This, in my sensitive young fervor, was my emotional tribute to the land of my birth.”

In addition to being an author and playwright, he was also an actor, illustrator, editor, art collector and Indiana legislator. He viewed public service as a responsibility of gentlemen in his socioeconomic class; and, although he served only one term in public office, he maintained a political presence his entire adult life. His political experiences were the basis for *In the Arena: Stories of Political Life*, a collection of short stories.

He attended Purdue University and Princeton University, and was awarded honorary degrees from both institutions, as well as from Columbia University and several others. Buildings named in his honor include Indianapolis Public Elementary School #92, Purdue University’s Tarkington Hall, and the Booth Tarkington Civic Theater in Indianapolis.

As a writer, Tarkington was both prolific and persistent. When he began losing his eyesight, he dictated to his secretary, and continued writing the rest of his life. Although he spent many of his later years at Seawood, his home in Kennebunkport, Maine, he maintained a home at 4270 N. Meridian Street in Indianapolis from 1923 until his death. His long-term residency there, and the fact he is buried in Crown Hill Cemetery, which lies on the southern boundary of the Butler-Tarkington area, make it very befitting that a neighborhood park would be named in his honor.



EDWARD D. PIERRE

(May 22, 1890-1971)

Edward D. Pierre, born May 22, 1890 in Fort Wayne, Indiana, briefly attended Valparaiso University, then transferred to Illinois Institute of Technology (formerly Armour Institute), where he earned a degree in architecture in 1915. After working two years in Detroit, he served in the U.S. Army Corps of Engineers during World War I, then moved to Indianapolis where he practiced until his retirement.

The principles Pierre championed are perhaps most accurately described by his own words written in the **"All American Resolution,"** a program he developed in response to President Dwight D. Eisenhower's challenge in 1960 to define long-range goals for America. In this resolution, Pierre sought to **"impress upon young people the progress that free men can make by intelligent planning;"** to encourage **"full participation by all Americans in an effort to erase slums and blight from the nation's cities and country-side;"** and to concentrate on **"solving the big decisions which face every community, as well as those of the nation."** His personal efforts to meet these goals were apparent in the work he performed throughout his professional career as an architect, as well as in his civic involvement in public service activities. Throughout his life, he successfully integrated good design with good citizenship.

His architectural works include not only grand up-scale homes such as those in Meridian Kessler and Williams Creek Estates, but also small, affordable housing for lower-income families. During his partnership with George Wright (**Pierre & Wright, 1925-1944**), he designed several commercial and public buildings, including Indianapolis-area fire stations, public schools, Bush Stadium, the Sears Roebuck building, the Old Trails Insurance building, and the elegant Indiana State Library and Historical Building. Many of the buildings Pierre & Wright designed are now landmarks listed on the National Register of Historic Places. The partnership was also responsible for initiating the now-traditional "Christmas on Monument Circle" – decorating the circle and monument with lights.

In 1944, the partnership with Wright was dissolved, and Pierre established his own firm, **Pierre and Associates**. From this time until his retirement, Pierre continued doing significant architectural work in Indianapolis, which included the master plan for downtown development in 1953, and the Tarkington Park tennis shelter, built in 1957.

He has been described as "one of the most significant and imaginative thinkers in regard to the beauty of Indianapolis" (by former mayor, Richard Lugar), and "the greatest architect the state of Indiana ever produced and probably the greatest visionary architectural professional Indiana has ever known" (by an executive director of the Indiana Society of Architects).

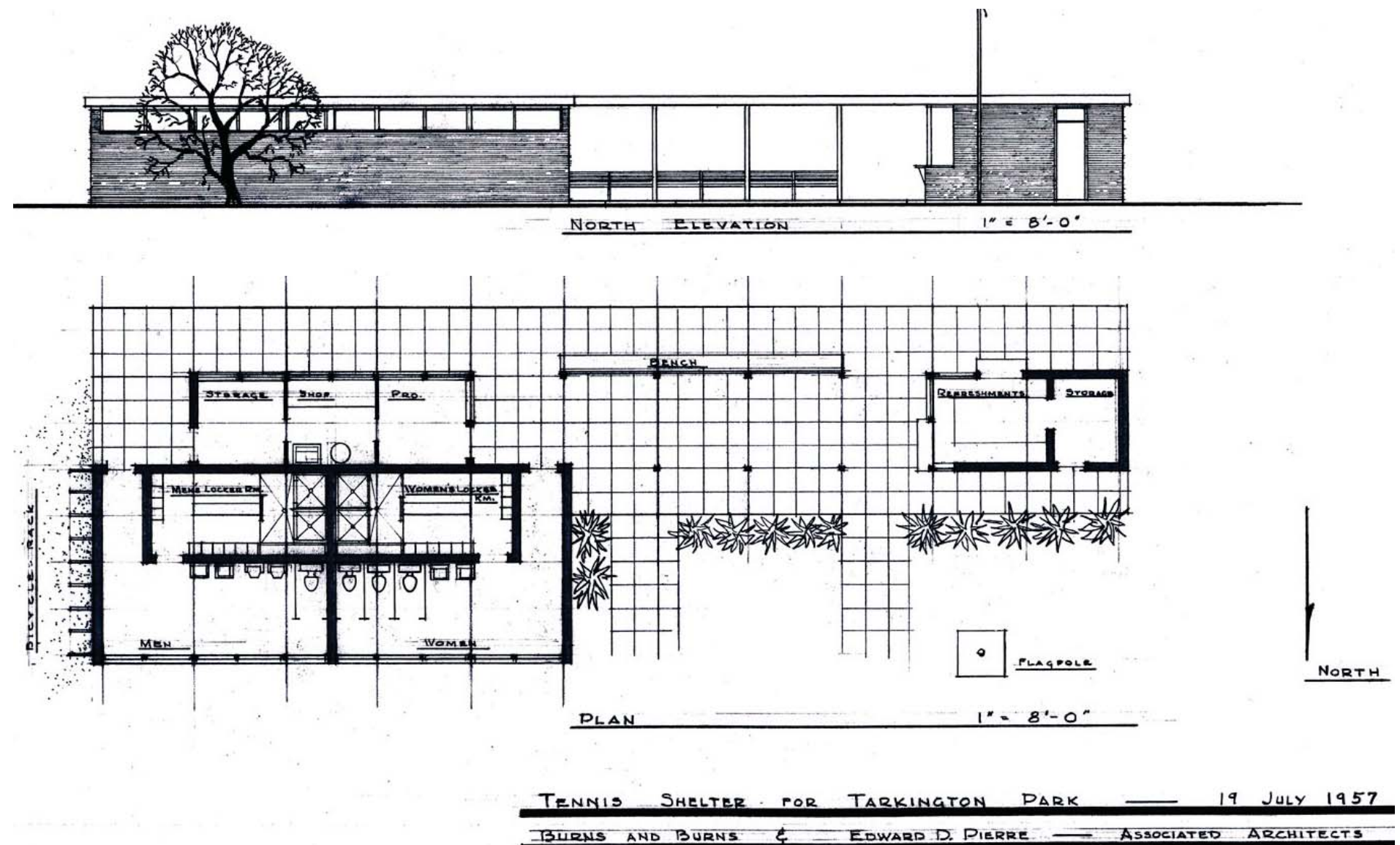
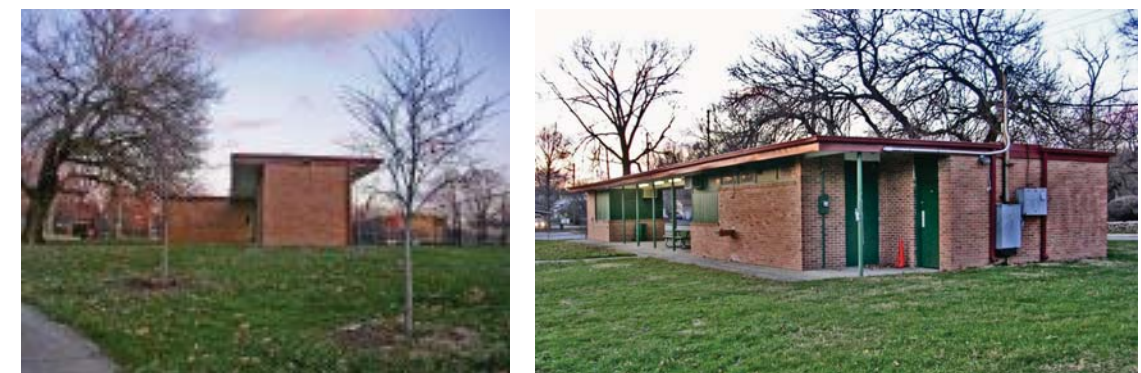


Image: Pierre & Wright Collection, Drawings + Documents Archive, Ball State University Libraries



Photography: Vess von Ruhtenberg



PUBLIC INPUT SUMMARY

Public Input played a vital role in guiding the master planning team. Prior to the design workshop, specific stakeholder groups, including neighboring property owners, non-profits, educational institutions, state agencies, municipal departments and elected officials, were identified and invited to participate in the design workshop. In addition, an invitation to participate in the workshop was sent to all property owners within a one mile radius of Tarkington Park. Phone calls, emails, letters and personal conversations with Indy Park's staff and the design team members were also collected.

A majority of the public input was given within the design workshop input sessions. These sessions were a series of listening meetings hosted by Indy Parks and the design team. Participants were given some questions in advance to help generate discussion and afforded the opportunity to voice any comments or concerns.

After the design workshop, a project website was launched to host all design information and provide further access to the process. This website enabled participants to view the presentation graphics and comment online on the proposed design.

All comments and opinions were recorded by the design team and synthesized into major themes and ideas voiced by the participants during the listening sessions. These major themes and ideas largely reinforced the input received by Midtown Indianapolis Inc., during their 2010 initiative. These comments directly help shape the design concepts and the master plan.



Invited Stakeholders and Participants:

- MLK Community Center
- North United Methodist Church
- Tarkington Tower
- 40 North Tower
- Midtown Indianapolis Inc.
- Butler Tarkington Neighborhood Association
- Meridian Kessler Neighborhood Association
- Meridian Street Foundation
- Mapleton-Fall Creek Development Corporation
- Watson-McCord/Historic Watson
- Crown Hill Development Corporation
- Indianapolis Museum of Art
- Butler University
- Children’s Museum
- Indiana State Fairgrounds
- Central Indiana Community Foundation
- Indiana Landmarks
- Department of Public Safety
- Department of Homeland Security
- Department of Public Works
- Indy Parks & Recreation
- Department of Economic Development
- Department of Metropolitan Development
- Mayor’s Office
- City County Council
- Parks Board
- General Public and Community Residents

Community Input Received By:

1. Stakeholder Interview Sessions
 - a. Park Neighbors
 - b. Community Groups
 - c. Potential Partners
 - d. City Employees
2. Open Public Session
3. Emails, phone calls and letters to give input

The Design of Tarkington Park should incorporate these Major Themes....

- Have a Distinctive Sense of Place
- Provide a unique urban park experience
- Build upon and support ongoing efforts of Midtown
- Celebrate Booth Tarkington & Edward Pierre
- Be welcoming to all ages & user groups
- Celebrate Diversity of the Community
- Incorporate Public Art and Programs
- Build Partnerships with the Farmers Market, the Church, MLK Center, Young audiences, others
- Inspire the creation of Friends of Tarkington Park
- Green Infrastructure

Design features of Tarkington Park should include....

- Innovative, Modern Playground
- More Shelters & Picnic Space
- Interesting Walking Paths & Circuits
- Multi - Purpose Events Lawn
- Performance Space
- Water Features, Creative Splash Pads, Interactive Water Elements
- Centralized Restroom Facilities
- Urban Dog Park
- Art Integration & Programs
- Drinking Water
- Year Round Facilities & Activities
- More Shaded Sitting Areas
- More Trees & Attractive Landscape
- Wi-fi Connectivity
- Tennis Courts
- Additional Basketball Courts
- Lighting
- Parking
- Pedestrian Connectivity/Safe Access
- Traffic Calming
- Traffic Signal at 40th & Meridian Street
- Views into the park

1:00

- health recreation "spark coil"
- 49th & Penn. residential density maintenance
- parking on-street
- lighting (security) "People in the park"
- plantings
- shaded benches
- game tables
- link park to adjacent features
- adjacent business
 - cafes
 - food
 - shops & Illinois
- program park w/ school
 - flash pad, soccer, b-ball
 - change station near tennis or central
- shelter areas
 - bandstand or stage
 - park passive activities
 - restrooms
 - "pay-for-use lights" on tennis
 - open lawn
 - medium trees
 - "values" of community
 - seating around tennis courts
 - park location
 - relationship w/ church
 - farmers market (shaded space)
 - dog park
- bike racks
- "workout stations"
- more than 1?
 - senior friendly
 - music
 - "draw people in large crowds"
 - attraction to "urban young"
 - potential for park
 - various demographics
 - keep existing features
 - historic appearance
 - function!

Documentation of Session 1

1:30

- send graphics
- website marketing
- "anchor" in community
- church cooperation
- social services
- business development
- implementation of plan
 - centralized changing rooms
 - conflict of activities
 - park uses
 - soft volleyball
 - softball/baseball determine need
 - phasing of activities
 - maintain park over time
- unused park space
 - expand park equipment
 - water features
 - trash cans
 - restrooms
 - pavilion; picnic tables throughout (3)
- gateways to neighborhood
 - "nappy" looking furnishings
 - pedestrian crossings
 - slow traffic
 - connection to neighborhoods
 - multiuse fields; placed safely
 - on-street parking
 - visually accessible to surroundings
 - "park center of commercial node" centrally located
 - walking paths - encourage use
 - historical marker
 - comprehensive program
 - get people in park
 - pedestrian crossings (38th)
 - art to art
 - Butler Ct. gateway
 - tennis courts
 - lights
 - more high activity
 - free dog park
 - squage dds
 - raise \$ for...
 - pop-power
 - lights
 - sustainable

Documentation of Session 2

2:00

- send graphics
- Post Office Park
- Arnold Arboretum
- adjacent uses of park
- virtually reconstruction P. Wright
- making Tarkington relevant, educating
- commentative structure
- more programmed uses
 - time of day/week/year
- feel more inviting
- people watch
 - medium trees
 - shaded seating
- innovation feature
 - motion & sound
 - topography
- art related programming
 - horticulture
- education
 - "da vinci pursuit" interactive
 - various plantings (labels)
- dog park
- picnic tables, trees
- adjacent development & relationship w/ park
- Illinois St.
- MLK Center
- church connection
- topo?
- regional vs. local context uses
- residential density
- "young audiences"
- Meridian St. location
- performance space
- ADA paths
- outdoor movies
- multicultural
- Victory Gardens
- connection to Tarkington

Documentation of Session 3

3:30

- Bethal pool
- Bratcliffe ice cream Monon
- depot on 38th
- restroom orientation
- seating/shelter by tennis
- generate revenue
- proximity to street
- open green space
- relationship w/ retail
- gateway into park
- work w/ church
- "sense of place"
- senior residents
- lighting
- access to center of park
- street trees
- wide paths; 8'-10' min
- sustainability
- visual blocks; topo
- paths as road; movement
- special events space
- programmed location
- dog maintenance
- flexible spaces
- landscape
- tower of 10 princ. pls; PS
- public restrooms
- eyes-on the park; natural surveillance
- programmed uses
 - older people activity
- activities & safety; standards
- lighting, pedestrian lighting
- sustainability & maintenance of park
- public-private partnerships
 - water spray pads
 - modern playgrounds; themes
 - shelters; performance
 - day vs. night activities
 - walking trails
 - senior center activities
 - baseball, soccer less needed
 - successful tennis use
 - ADA athletics
 - shade; trees, canopies
 - replace dead trees
 - dog parks; 4+ acres
 - year round use; lawn maintenance
 - water, shade, seed
 - dual use basketball court
 - different age groups
 - court locations
 - programmed activities
 - rebuilding tennis structure
 - walking trail; distances
 - plantings
 - tables, chairs
 - trees
 - more evening use
 - maintenance; high use by shelters and courts
 - more basketball courts
 - use of baseball diamond
 - small group congregation
 - park maintenance
 - utilize space
 - skating
 - interactive water feature
 - pavilion/band structure
 - sooner
 - dog, walking trails
 - water feature
 - shelter/grotto
 - security
 - park hosts
 - sitting places
 - drinking water, shade, restrooms
 - topography
 - diversity of neighborhood
 - volunteer park attendant

Documentation of Session 4

3:30 cont'd

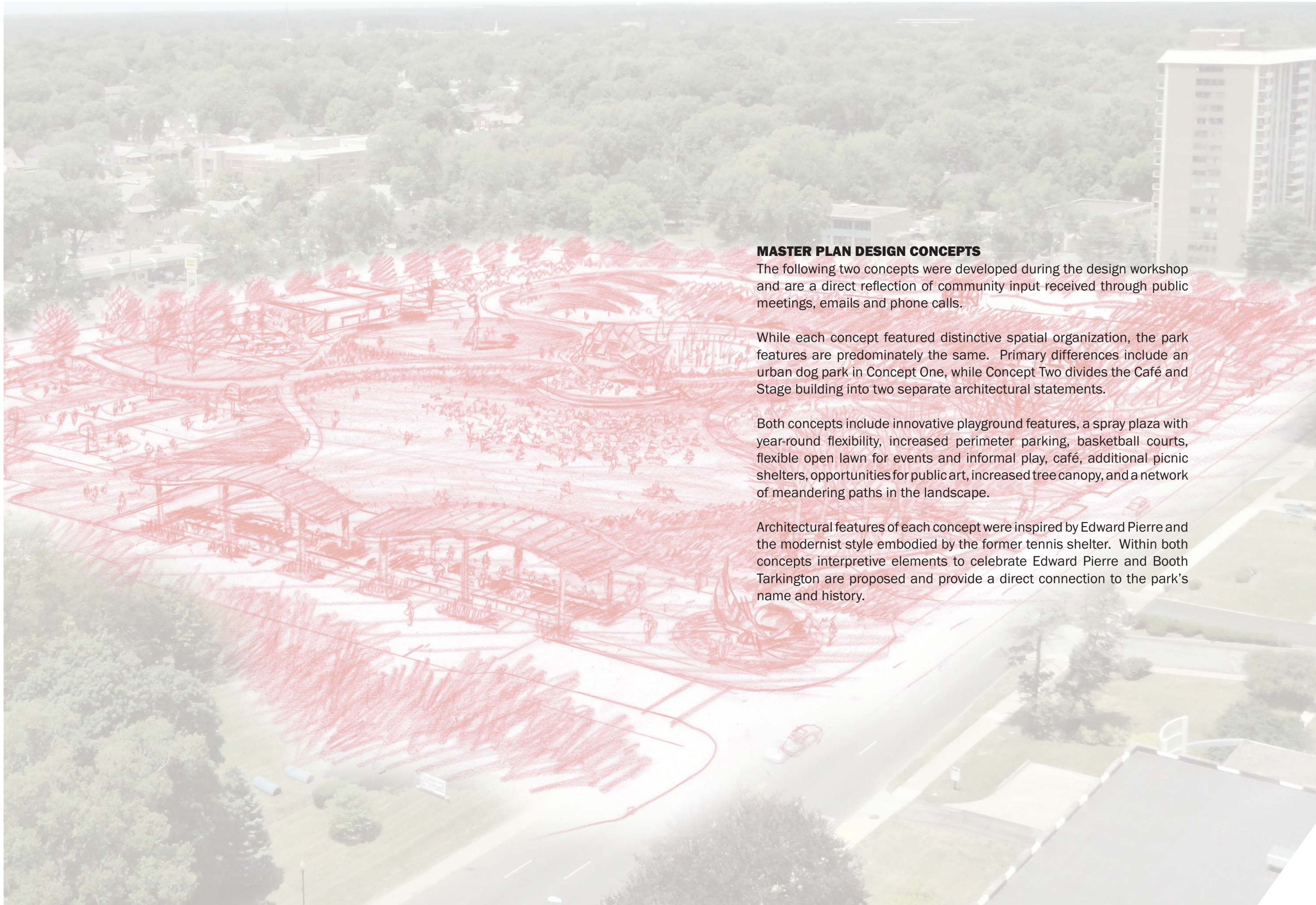
- free contributions
- ball court used most often
- teenage & older black
- tennis used periodically 4 months
- playground use periodically; parental watch
- demanded for children low
- pedestrian safety @ 40th & Meridian
- Illinois safer
- parking not full, shelter occasional use
- walking paths
- distance walking paths; picnic tables
- southern edge of park usual little
- public-private partnerships
- "designed for whom"
- vacant building
- attracting people
- use park as attraction for people
- various programming to attract live, work, shop
- diverse neighborhood
 - drinking fountains thru/out
 - no need for baseball
 - shaded mature trees
 - seating thru/out
 - program w/ school
 - outer streets
 - walking trail
 - lighting
 - rebuild tennis shelter
- outdoor music facing south
- weather over time
- crossing 38th St.
- getting to park
 - more trees
 - commuter traffic
 - additional design/centralized
 - green space/plantings
 - deshetics
 - clean up efforts
 - park features for kids
 - basketball courts
 - traffic light on 40th
 - benches, playground to middle
 - safety of park
 - getting to park
 - play area for children; location
 - MLK center connection
 - designing park for who?
 - public outreach for park
 - shelter; good ideas thus far

Documentation of Session 4

3:30

- distinctive feature
- nostalgia quality
- rebuild tennis structure
- beautiful; "needs to be there"
- rebuild tennis structure
- lighting
- walking trail; distances
- plantings
- tables, chairs
- trees
- more evening use
- maintenance; high use by shelters and courts
- more basketball courts
- use of baseball diamond
- small group congregation
- park maintenance
 - utilize space
 - skating
 - interactive water feature
 - pavilion/band structure
 - sooner
 - dog, walking trails
- water feature
- shelter/grotto
- security
- park hosts
- sitting places
- drinking water, shade, restrooms
- topography
- diversity of neighborhood
- volunteer park attendant
- "reason to be there"
 - walking trail
 - youth activities
 - inviting
 - older tree growth
 - Wi-Fi, shaded benches, trees
 - rebuild tennis structure
 - winter skating rink
 - topography
 - access to street
- winter activities
 - topography variations
 - rebuild tennis structure
 - large hill (Act Museum)
 - cross street use (south)
 - Tarkington Hill
 - water feature
 - Holiday Ball "draw diverse group of people"
 - tree plantings
 - lake/walking path
 - central water feature

Documentation of Session 5



MASTER PLAN DESIGN CONCEPTS

The following two concepts were developed during the design workshop and are a direct reflection of community input received through public meetings, emails and phone calls.

While each concept featured distinctive spatial organization, the park features are predominately the same. Primary differences include an urban dog park in Concept One, while Concept Two divides the Café and Stage building into two separate architectural statements.

Both concepts include innovative playground features, a spray plaza with year-round flexibility, increased perimeter parking, basketball courts, flexible open lawn for events and informal play, café, additional picnic shelters, opportunities for public art, increased tree canopy, and a network of meandering paths in the landscape.

Architectural features of each concept were inspired by Edward Pierre and the modernist style embodied by the former tennis shelter. Within both concepts interpretive elements to celebrate Edward Pierre and Booth Tarkington are proposed and provide a direct connection to the park’s name and history.



CONCEPT ONE | OVERALL SITE PLAN



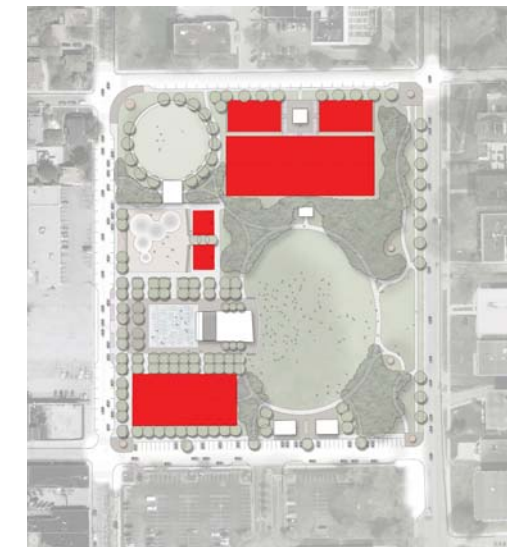
Circulation



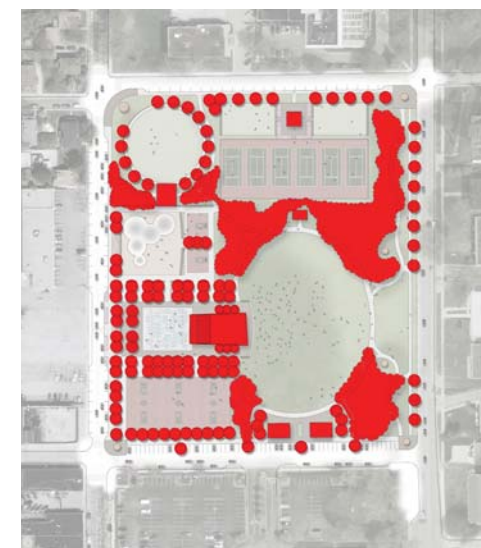
Public Art



Structured Play Areas



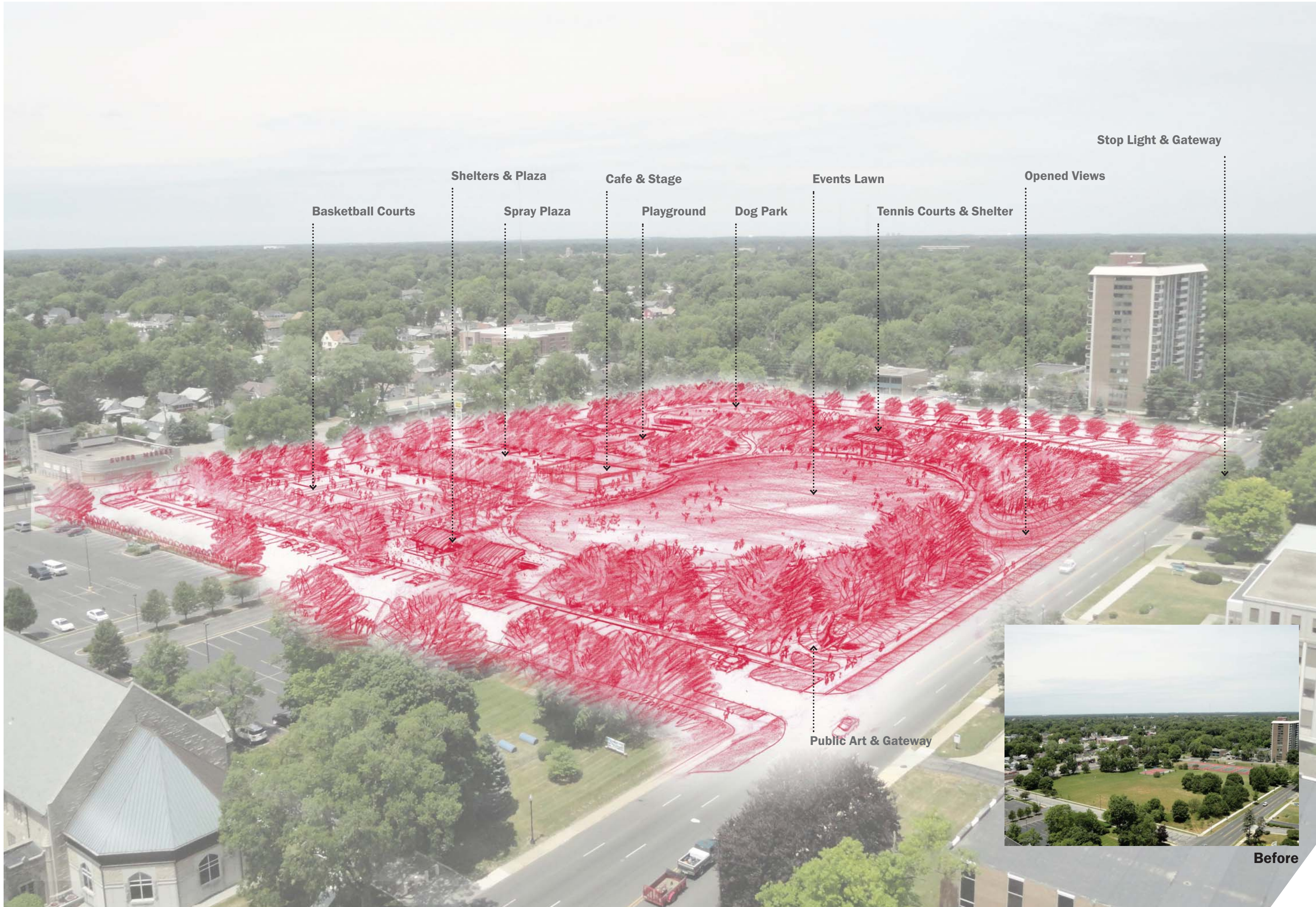
Sports & Recreation



Shade



Shelters and Structures



Basketball Courts

Shelters & Plaza

Spray Plaza

Cafe & Stage

Playground

Dog Park

Events Lawn

Tennis Courts & Shelter

Opened Views

Stop Light & Gateway

Public Art & Gateway



Before



CONCEPT TWO | OVERALL SITE PLAN



Circulation



Public Art



Structured Play Areas



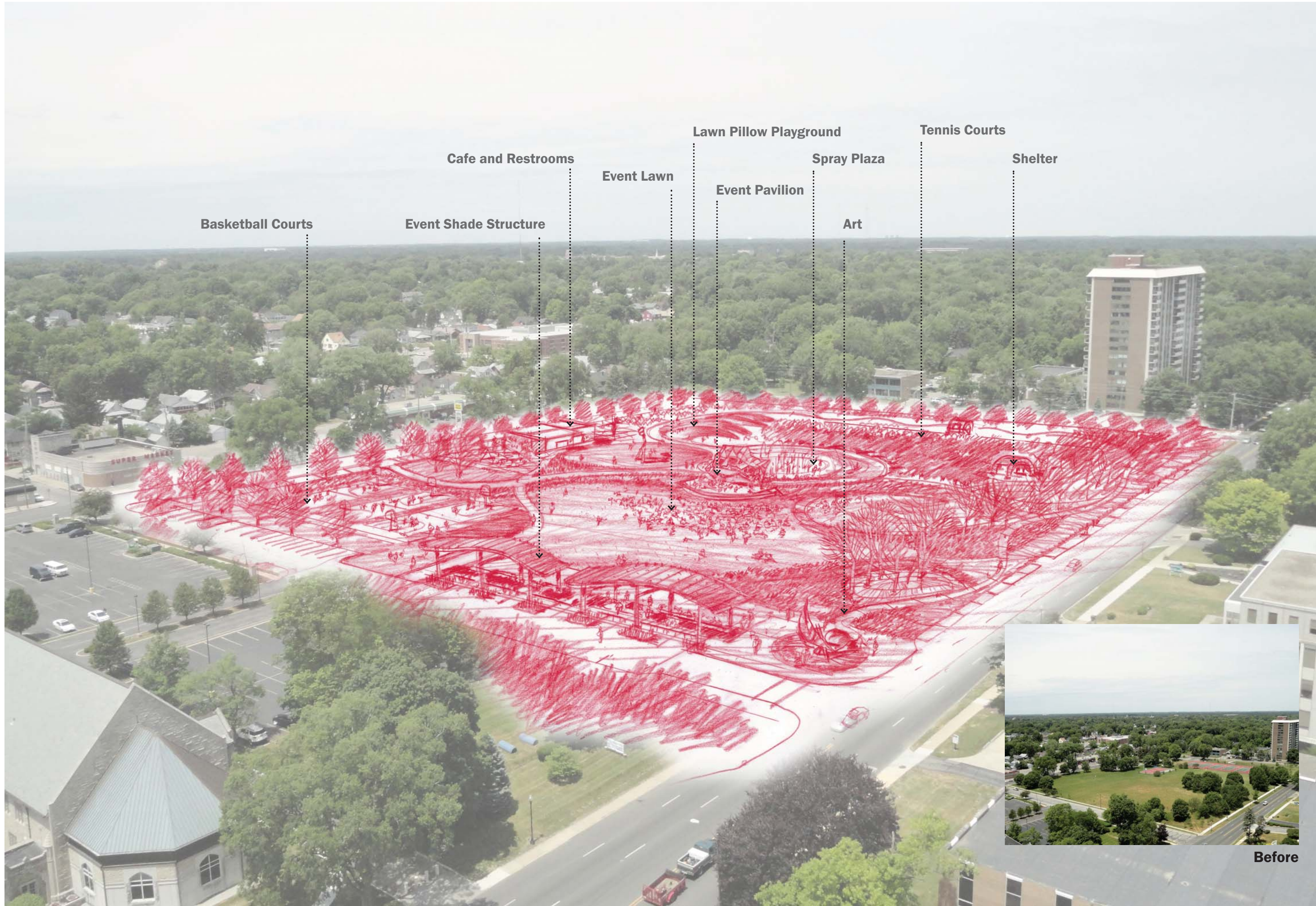
Sports & Recreation



Shade



Shelters and Structures



Basketball Courts

Event Shade Structure

Cafe and Restrooms

Event Lawn

Lawn Pillow Playground

Event Pavilion

Spray Plaza

Art

Tennis Courts

Shelter



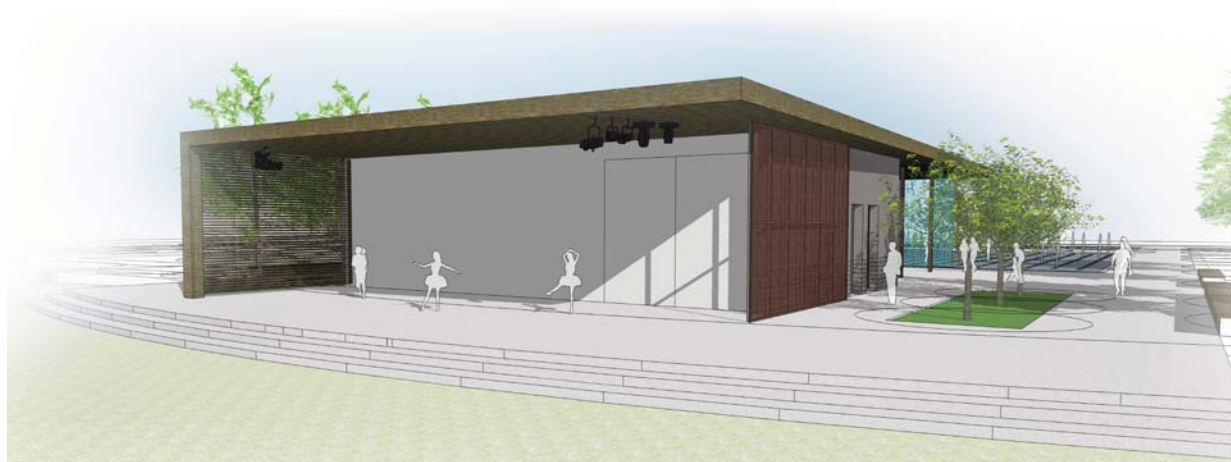
Before



Concept One | Pavilion Concept - Northwest View



Concept Two | Cafe Concept - Northwest View



Concept One | Pavilion Concept - Northeast View



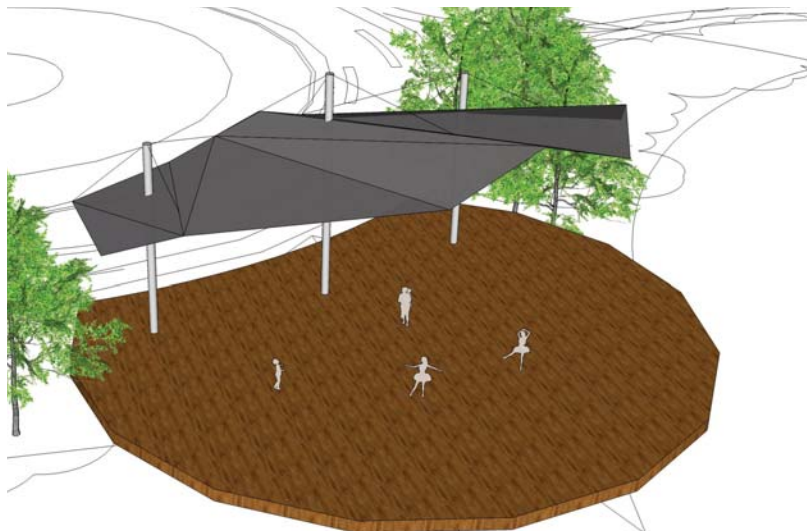
Concept Two | Cafe Concept - Southwest View



Concept One | Pavilion Concept - Southeast View



Concept Two | Cafe Concept - Southwest Aerial View



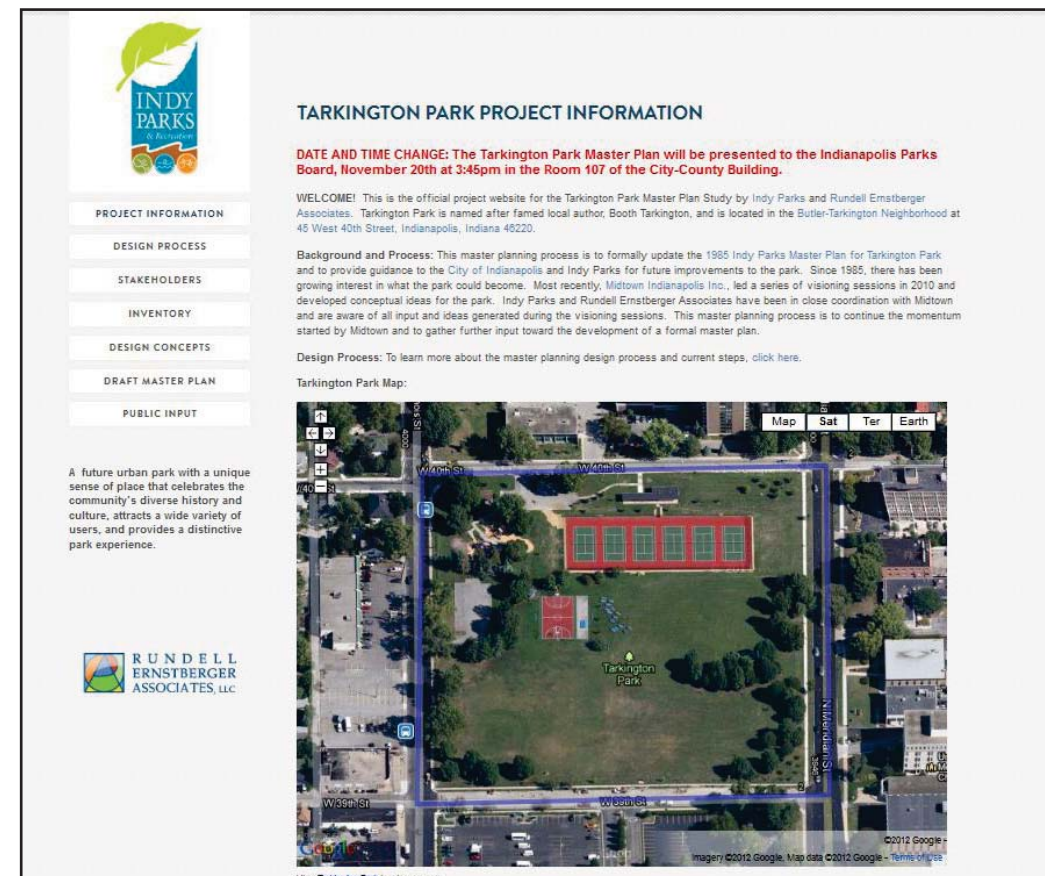
Concept Two | Pavilion Concept 'A'



Concept Two | Pavilion Concept 'B'



Concept Two | Pavilion Concept 'C'



Project Website

Public Input on Park Design Concepts:

1. Public Presentation of Concepts (July 16th)
 - a. Stakeholders
 - b. General Public
2. Project Website (www.reasite.com/tarkingtonpark)
3. Media Coverage
4. Emails, phone calls, letters and website comments
5. Additional Meetings with Stakeholder Groups and City Departments

Major Themes from Public Comments on Design Concepts:

- Concept One is preferred
- Reshape mounds for views - Don't completely remove mounds
- Open view at the corner of 39th Street and Meridian Street
- Cafe and Stage should become separate buildings
- Cafe should sit along Illinois Street and be operated by a private entity
- Open lawn area should be flexible and accommodate a variety of uses
- Concerts, movies and plays would be programmed in partnership with the local community
- Only two basketball courts are needed
- More security and lighting
- Integrate bus stop and bike lanes along Illinois Street
- Plan for ongoing park management and maintenance

Master Plan Summary

The final master plan is a representation of the public input received on the concept master plans and the draft master plan. Major features of the plan include:

The Central Plaza Space: This is the central hub of activity within the park and includes the Café and Stage structures. The café structure sits along Illinois Street and engages the streetscape enhanced for increased visibility, access and walkability. The plaza space around the café provides adequate seating for patrons and park users. To the east of the café is the spray plaza. This dynamic, interactive water feature acts as an inviting, architectural element within the park as well as a refreshing play feature on hot summer days. The spray plaza space transforms into an ice skating rink for year-round activities within the park. The spray plaza is engaged on the east end by a multipurpose park structure containing park restrooms, picnic and sun shelter, and an events stage. This all-in-one structure can be used by Indy Parks for vendor space, movies and concerts in the park, and picnic shelter rentals for parties and family reunions. The design of these structures is inspired by Edward Pierre and his legacy within the park and includes interpretive elements for Pierre and Booth Tarkington integrated into their design.

Open Lawn: At the center of the park lies a large open lawn, or greensward, to serve a variety of programmed and informal uses. The 2.25 acre lawn is large enough to contain a sports field and could be used for informal soccer, baseball, and football, as well as Frisbee, kite flying, picnics, and community gatherings. When a performance or movie takes place on the stage, the lawn can be used for seating. A graceful terrace from the central plaza engages the lawn on the west, while an approximately 1/4 mile walking circuit wraps the greensward and connects with the other walking paths throughout the park.

Urban Dog Park: A first of its kind for Indianapolis, this unique space for sociable canines and their owners would have an undulating artificial turf surface that can withstand heavy use and would be rinsed daily to provide a clean play environment for both canines and humans. Some of the large existing trees are preserved for shade, supplemented by a small picnic shelter. A short walking loop provides the ability to use the space for walking exercises and training. A fence enclosure surrounds the dog park, accessed by electronic key - a paid service similar to Indy Park's other dog parks. A series of dog play structures are included to enhance the canine recreational experience.

Playground: The playground is shifted south, away from the busy 40th and Illinois Street intersection. Surrounded by lush plantings and seatwalls to provide an abundance of shaded seating opportunities for watchful parents, the playground features a highly innovative play experience unlike any playground in the region, with imaginative slides, climbing mounds and walls, rope structures, and swings. Two half-court basketball courts sit just east of the playground give younger kids another recreational opportunity within the safe environment of the playground. The playground provides opportunities for all ages and abilities, with 2-5 year-old, 6-12 year-old, and ADA play opportunities.

Northern Shelter and Recreation Area: Along 40th Street, the master plan proposes a new recreational area to serve the nearby apartment communities developed around the recently restored tennis courts. As a gateway to the tennis center, a community gathering space with a picnic shelter, plaza space with seatwalls, and a drinking fountain sets between two new recreational court spaces, programmed for a combination of bocce ball courts, badminton courts and sand volleyball courts.

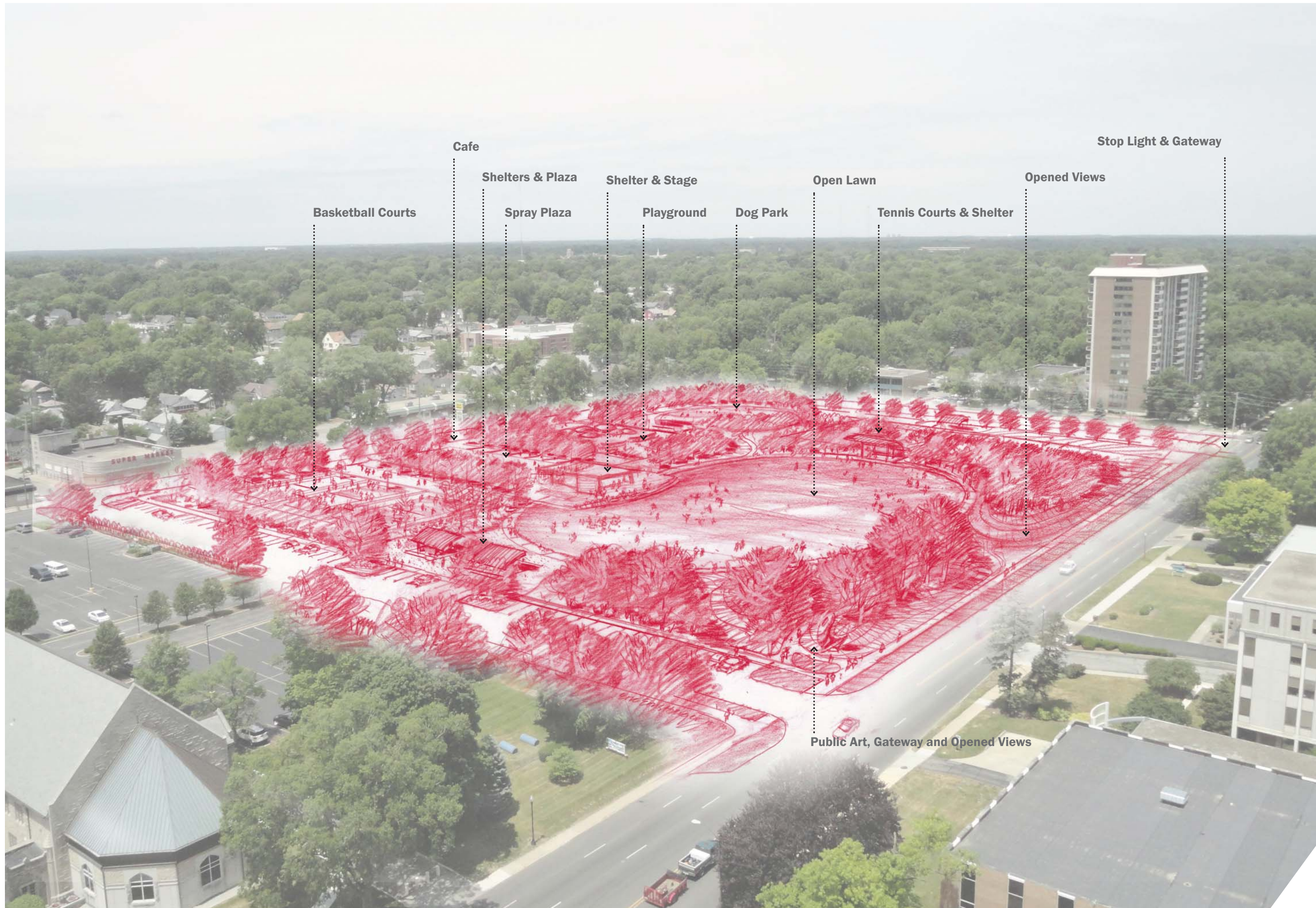
39th Street Farmer's Market Space: Along 39th Street, two multipurpose shelters prominently occupy a plaza on axis with the open lawn. These shelters will serve as the centerpiece for the Farmer's Market activities, as well as community picnic shelters. 39th Street is designed to be easily closed to vehicular traffic during market days or other community events.

Perimeter Treatments: New sidewalks are proposed along all edges of the park to facilitate pedestrian access. Bump-outs (or curb extensions) are proposed at all intersections to foster safe pedestrian crossing and provide traffic calming. A signalized intersection is proposed at the 40th and Meridian Street intersection to help pedestrians from the neighborhoods east of Meridian safely cross the street and slow traffic. All parking has been relocated from the interior of the park to its exterior edges along the surrounding streets, allowing for greater visibility and security, while increasing available parking from 46 spaces to 136 spaces. Along Illinois Street, a bus shelter and integrated bike lanes are included. The existing berm along Meridian Street will be reshaped, inviting views into the park by commuters and pedestrians.

Public Art: A major sculpture piece is proposed as a gateway into the park at each corner. The provision of these artworks is envisioned as a partnership with the Indianapolis Museum of Art and other local arts organizations and could potentially occur on a rotating basis. Other artworks would be placed at major pedestrian paths and integrated as smaller pieces throughout the park's landscape.

Sustainability: Aligned with the project goal of establishing a model for urban parks in Indianapolis, the integration of sustainable infrastructure and building solutions is a key component of the proposed master plan, Low impact development practices, including green roofs, stormwater planters, permeable pavers, storm water collection and reuse, native plantings, water efficient irrigation systems, LED lighting and recycled materials will be employed to reduce the park's energy consumption and promote green development in our community.





Basketball Courts

Cafe

Shelters & Plaza

Spray Plaza

Shelter & Stage

Playground

Dog Park

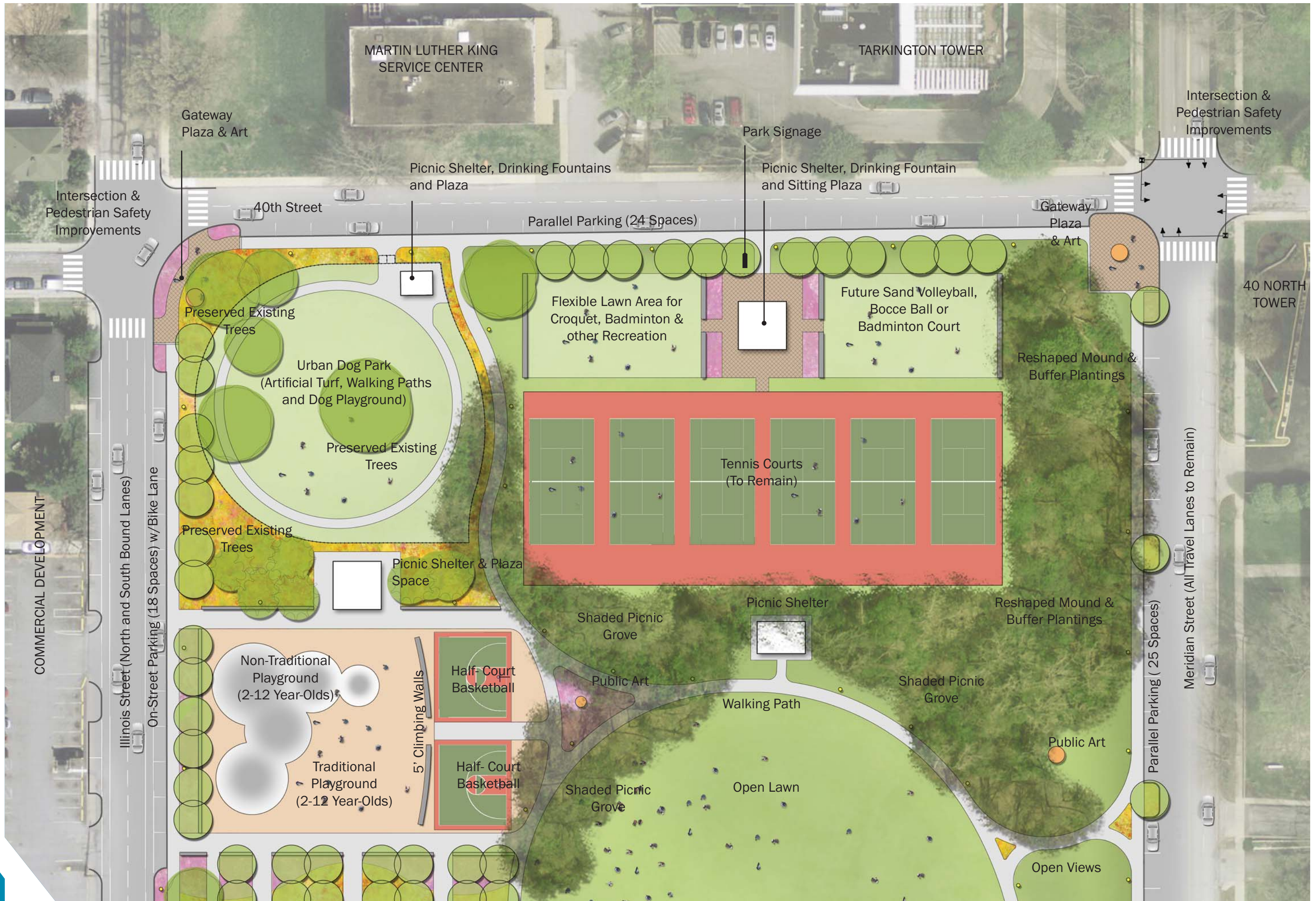
Open Lawn

Tennis Courts & Shelter

Opened Views

Stop Light & Gateway

Public Art, Gateway and Opened Views

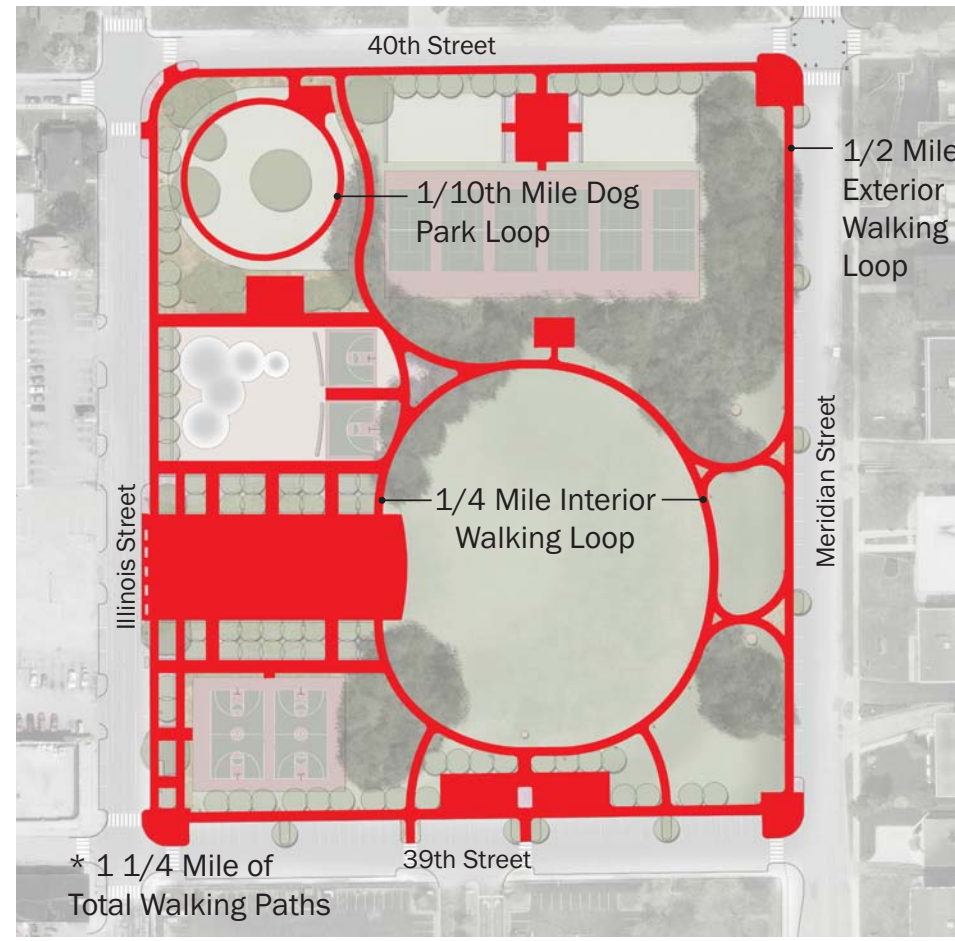


COMMERCIAL DEVELOPMENT

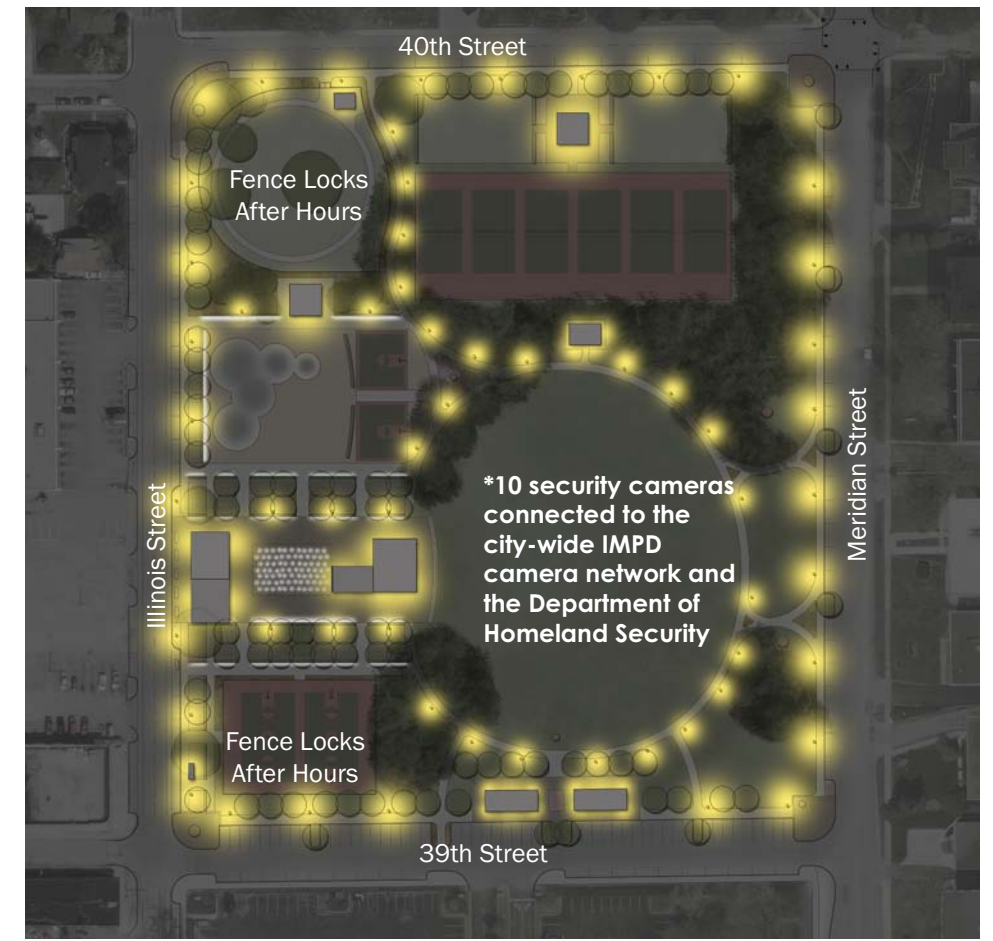




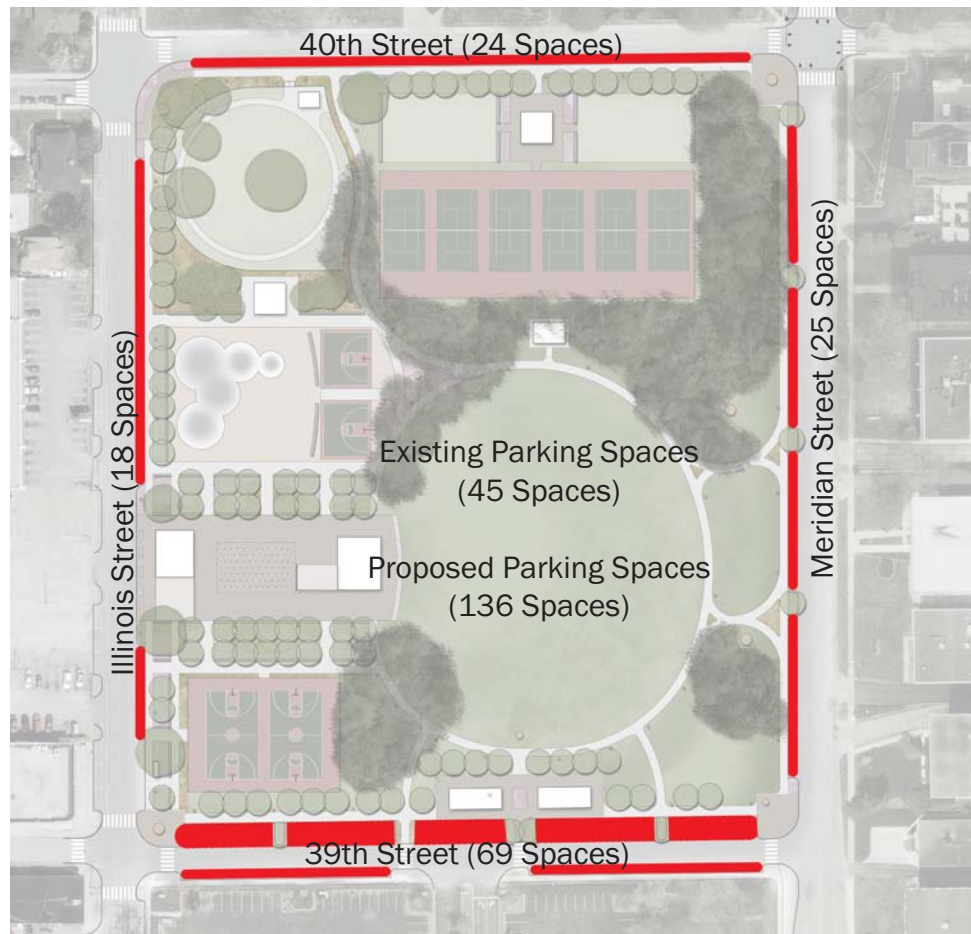
Shade



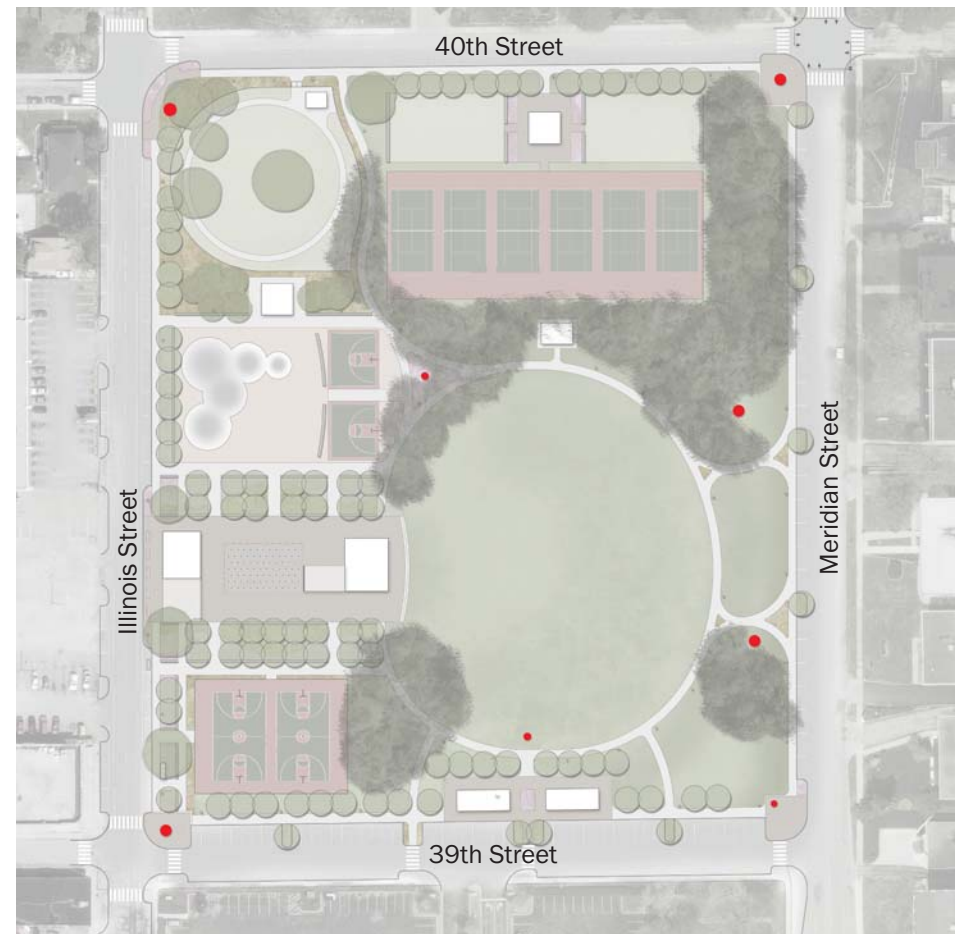
Circulation



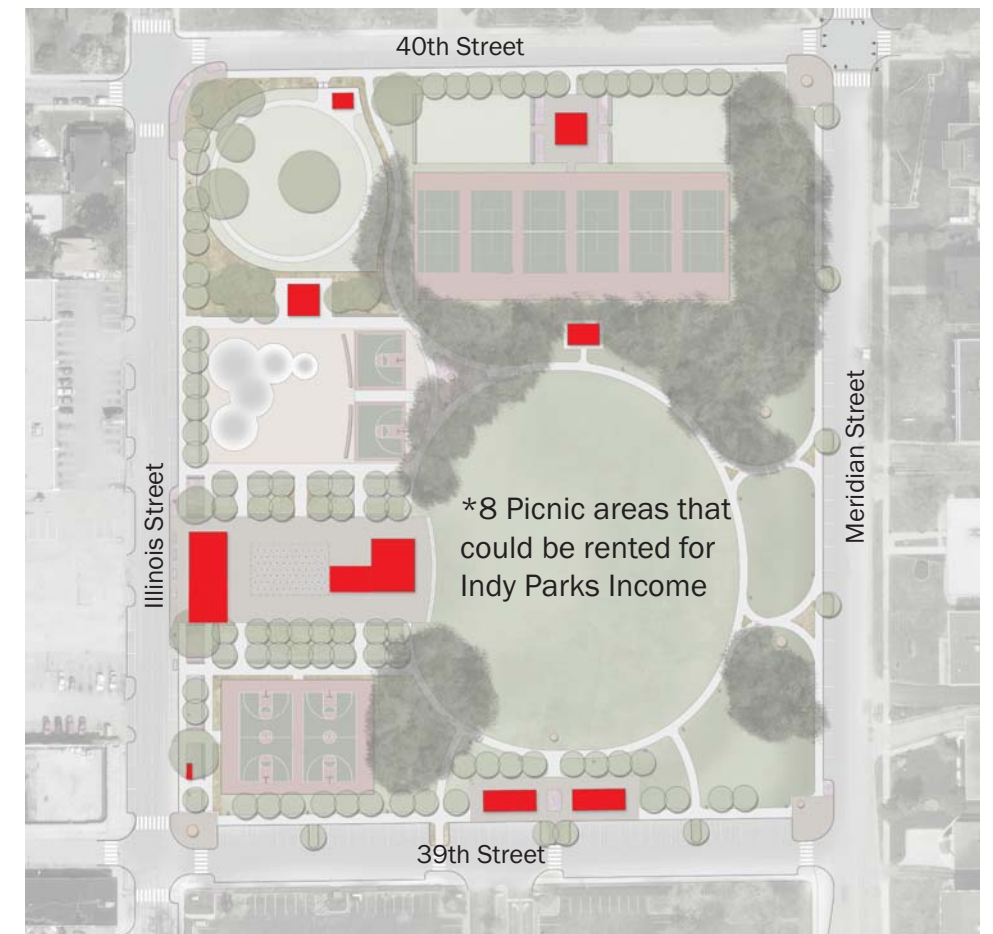
Lighting and Security



Parking



Public Art



Shelters and Structures



Central Plaza

As part of the master plan study, two specific structures were identified to be programmed and designed. One is a café pavilion that will be in operation the entire year and the second, a multi-purpose picnic and performance shelter that will also house the main restrooms for the park. Both structures will frame and support a spray park that will also have the ability to be converted to a skating rink in the winter time. The architecture is intended to be an extension of the ground plane that continually folds up, around, and over each structure. With the addition of green roofs, the buildings and landscape become one.



Café Building

The café structure is located parallel to Illinois Street and serves as the Park's western gateway. This view shows how the ground plane extends up and over the café, framing the interior space but also providing shade and shelter for outdoor dining and seating areas. The strong horizontality and large overhangs pay homage to the park pavilions originally designed by Edward Pierre.



Multi-Purpose Structure

The multi-purpose structure houses the parks main restrooms but also serves as a picnic shelter that can become a performance shelter. A series of sliding and pivoting wall planes will provide some flexibility for performance settings but also provide enhanced acoustics. In this view, you can see how the extended ground plane begins as the stage platform and then folds up and over, framing the performance area.



Restroom and Shelter

As the ground plane folds to frame the stage, it turns and extends to the west to become integrated with the spray park. The extension becomes an open shade structure that also frames views to other areas of the park. Restrooms and a snack bar face the spray park and are integrated under the fold.



Tom Leader Studio and HKW | Railroad Park, Birmingham Alabama



Bus Shelter, | Wake Technical Community College | Raleigh, NC



Virginia Tech School of Architecture + Design | Covington Farmer's Market



Best Design Home | Carmenzind Evolution
Sieman's Restaurants, Zurich, Switzerland



Ester Havel | Light4Space | Park Café, J.M. Hurbana Park, Slovakia



Hewitt Studios | Straw Bale Café, Herefordshire, UK



Nelson Byrd Woltz Landscape Architects | City Garden, St Louis, Missouri



Rundell Ernstberger Associates | Main Street Square, Rapid City, South Dakota



Hargreaves Associates | Cumberland Park, Nashville, Tennessee



Human Nature | Washington Park, Cincinnati, Ohio



Ross Recreation | Landscape Structures Evo



Playworks | LaLa Gnar Photography | Assiniboine Park



Landscape Structures Mobius



Hargreaves Associates | Cumberland Park, Nashville, Tennessee



Takano Landscape Planning | Showa Memorial Park



Hargreaves Associates | Cumberland Park, Nashville, Tennessee



Mark Di Suvero | Aesope's Fables



Bernard Venet | 2 Arcs



Type A | Align



Zaha Pavilion | Burnham's Pavilion



Rundell Ernstberger Associates | Campus Martius Park | Detroit, Michigan



Rundell Ernstberger Associates | Campus Martius Park | Detroit, Michigan



Rundell Ernstberger Associates | Main Street Square | Rapid City, South Dakota



Rundell Ernstberger Associates | Main Street Square | Rapid City, South Dakota





Tarkington Park
Size: 650'x750', 10.5 acres



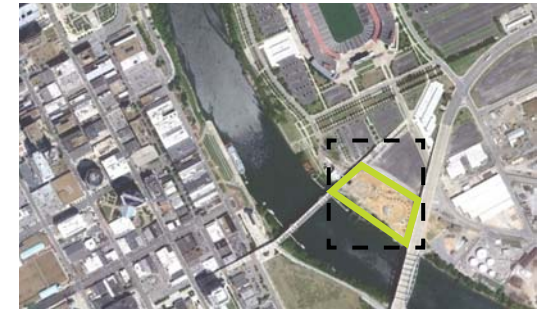
Railroad Park - Birmingham, Alabama
Size: 425' x 1850', 18 acres
Budget: \$17.5 Million

Features: Open lawn, terraced seating areas, lake, walking pions, covered plaza, skate park, and playgrounds.



Discovery Green - Houston, Texas
Size: 800' x 900', 16.5 acres
Budget: \$125 Million

Features: Splashpad and fountain, dog runs, lake, stage, promenade, jogging trail, art, and native gardens.



Cumberland Park - Nashville, Tennessee
Size: 700' x 375', 6.5 acres
Budget: \$11 Million

Features: Interactive playground, esplanade, trail system, canopy and lawn.



City Garden - St. Louis, Missouri
Size: 250' x 600', 3.5 acres
Budget: \$30 Million

Features: Waterwall and splash pad, outdoor cafes, art, rain gardens, and extension of mall.



Washington Park - Cincinnati, Ohio
Size: 425' x 820', 8 acres
Budget: \$48 Million

Features: Parking garage, stage, event lawn, urban dog park, interactive fountain, public art and playground



IMPLEMENTATION SUMMARY

The following cost opinion will help guide Indy Park’s efforts to assemble a funding program of capital funds, operating funds, public/private partnerships, and grants needed to implement the master plan.

The costs opinion addresses for the proposed improvements within the park property as well as those in the public right of way. The outlined costs are intended as preliminary, planning-level estimates of the anticipated construction cost of the master plan. More detailed and precise numbers need to be developed once a topographic survey is completed and more detailed design of the park features is completed.

Cost Opinion

DESCRIPTION	QUANTITY	UNIT	UNIT COST	TOTAL
DEMOLITION / FACILITIES and CONTROLS				
Site Clearing of Vegetation	1	LS	\$ 20,000.00	\$ 20,000.00
Site Demolition	1	LS	\$ 50,000.00	\$ 50,000.00
				\$ 70,000.00
NEW CONSTRUCTION				
EARTHWORK				
Erosion Control	1	LS	\$ 10,000.00	\$ 10,000.00
Excavation (General Cut and Fill)	10,000	CY	\$ 10.00	\$ 100,000.00
Topsoil	500	CY	\$ 35.00	\$ 17,500.00
				\$ 127,500.00
SITE UTILITIES				
Sanitary Sewer - Stage & Café	1	LS	\$ 80,000.00	\$ 80,000.00
Site Electrical	1	LS	\$ 150,000.00	\$ 150,000.00
Storm Drainage	1	LS	\$ 100,000.00	\$ 150,000.00
Water Service	1	LS	\$ 40,000.00	\$ 40,000.00
				\$ 420,000.00
PAVEMENTS				
Asphalt Vehicular Pavement	34,000	SF	\$ 4.50	\$ 153,000.00
Concrete Band	600	LF	\$ 15.00	\$ 9,000.00
Specialty Pavers	40,000	SF	\$ 12.00	\$ 480,000.00
Concrete Curb	2,930	LF	\$ 15.00	\$ 43,950.00
Concrete Pavement Sidewalks	40,000	SF	\$ 5.00	\$ 200,000.00
Concrete Terrace Steps	300	SF	\$ 10.00	\$ 3,000.00
Dog Park Artificial Turf	23,000	SF	\$ 8.00	\$ 184,000.00
Basketball Court	3	EA	\$ 25,000.00	\$ 75,000.00
				\$ 1,147,950.00
STRUCTURES				
Café Building	1	EA	\$ 562,500.00	\$ 562,500.00
Stage & Restroom Building	1	EA	\$ 695,600.00	\$ 695,600.00
50x20' Market Shelters	2	EA	\$ 115,000.00	\$ 230,000.00
30x30' Picnic Shelter	2	EA	\$ 60,000.00	\$ 120,000.00
20x30' Picnic Shelter	1	EA	\$ 40,000.00	\$ 40,000.00
15x20' Dog Park Shelter	1	EA	\$ 20,000.00	\$ 20,000.00
5x15' Bus Shelter	1	EA	\$ 20,000.00	\$ 20,000.00
Seatwalls	890	LF	\$ 300.00	\$ 267,000.00
Playground	1	LS	\$ 400,000.00	\$ 400,000.00
				\$ 2,355,100.00
AQUATIC				
Interactive Fountain and System	1	LS	\$ 800,000.00	\$ 800,000.00
				\$ 800,000.00
SIGNAGE				
Park Sign - Primary	3	EA	\$ 10,000.00	\$ 30,000.00
Wayfinding Signage	10	EA	\$ 5,000.00	\$ 50,000.00
Interpretive Signage	5	EA	\$ 8,000.00	\$ 40,000.00
Booth Tarkington & Edward Pierre Interpretive Walls	2	EA	\$ 15,000.00	\$ 30,000.00
				\$ 150,000.00
SITE LIGHTING & SPECIALITY ELECTRICAL				
16' Light Pole & Foundation (Single Luminaire)	40	EA	\$ 5,000.00	\$ 200,000.00
LED Speciality Architectural Lighting	150	LF	\$ 1,000.00	\$ 150,000.00
WiFi Connectivity	1	LS	\$ 100,000.00	\$ 100,000.00
Security Cameras	10	EA	\$ 10,000.00	\$ 100,000.00
9' Emergency Call Towers	5	EA	\$ 8,000.00	\$ 40,000.00
Street Lights	27	EA	\$ 10,000.00	\$ 270,000.00
				\$ 860,000.00

DESCRIPTION	QUANTITY	UNIT	UNIT COST	TOTAL
SITE FURNISHINGS				
Bike Racks	30	EA	\$ 500.00	\$ 15,000.00
Drinking Fountain	1	EA	\$ 3,000.00	\$ 3,000.00
Dog Park Drinking Fountain with Dog Bowl	3	EA	\$ 4,500.00	\$ 13,500.00
Picnic Tables (in shelter)	65	EA	\$ 900.00	\$ 58,500.00
Trash Receptacles	25	EA	\$ 1,000.00	\$ 25,000.00
Doggie Bag Receptacles	6	EA	\$ 600.00	\$ 3,600.00
Plaza Table and Seating	50	EA	\$ 3,000.00	\$ 150,000.00
Bench	30	EA	\$ 1,200.00	\$ 36,000.00
Dog Park Playground Amenities	1	LS	\$ 10,000.00	\$ 10,000.00
Dog Park - Ornamental Fence & Magnetic Locks	650	LF	\$ 55.00	\$ 35,750.00
Basketball Ornamental Fence & Magnetic Locks	550	LF	\$ 55.00	\$ 30,250.00
Exterior Game Tables	8	EA	\$ 1,500.00	\$ 12,000.00
				\$ 392,600.00

LANDSCAPE WORK (Includes Warranty and Maintenance)				
Dog Park Irrigation	23,000	SF	\$ 1.50	\$ 34,500.00
Lawn (Sod) Irrigation	78,000	SF	\$ 1.50	\$ 117,000.00
Plant Beds Irrigation	18,000	SF	\$ 2.00	\$ 36,000.00
Lawn (Sod)	8,666	SY	\$ 5.50	\$ 47,663.00
Lawn (Seeded)	4	ACRES	\$ 2,500.00	\$ 10,000.00
Sport Activity	1	LS	\$ 50,000.00	\$ 50,000.00
Plant Beds (Perennials, Grasses, Plugs)	18,000	SF	\$ 15.00	\$ 270,000.00
Shrubs	600	EA	\$ 50.00	\$ 30,000.00
Trees - Ornamental - 2.5"	100	EA	\$ 250.00	\$ 25,000.00
Trees - Shade - 3"	200	SF	\$ 750.00	\$ 150,000.00
Trees - Speciment - Spaded	30	EA	\$ 2,000.00	\$ 60,000.00
				\$ 830,163.00

SUBTOTAL				\$ 7,153,313.00
General Conditions (5%)			\$	357,665.65
Mobilization/Demobilization (5%)			\$	357,665.65
Contingency (20%)			\$	1,430,662.60
GRAND TOTAL				\$ 9,299,306.90

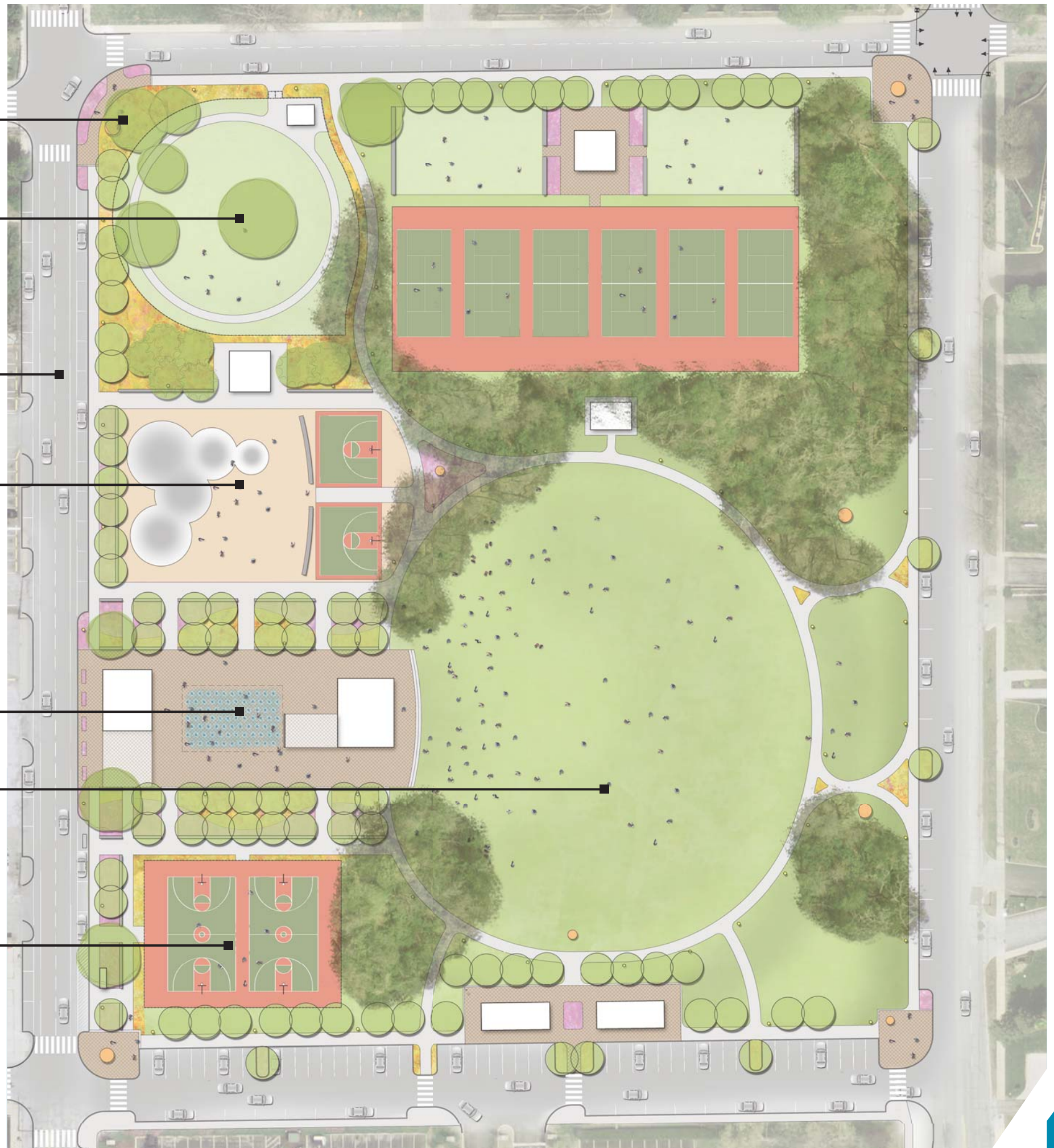
Optional Costs (Not Included Above)

DESCRIPTION	QUANTITY	UNIT	UNIT COST	TOTAL
Water Wall and System	1	LS	\$ 350,000.00	\$ 350,000.00
Ornamental Light and Sound Tower around Open Lawn	15	EA	\$ 40,000.00	\$ 600,000.00
Stage - Audio & Visual System	1	LS	\$ 120,000.00	\$ 120,000.00
Public Art Commissions	8	EA	\$ 100,000.00	\$ 800,000.00
				\$ 1,870,000.00
General Conditions (5%)			\$	93,500.00
Mobilization/Demobilization (5%)			\$	93,500.00
Contingency (20%)			\$	374,000.00
OPTIONAL COSTS TOTAL				\$ 2,431,000.00

Off-Property Improvement Costs (Not Included Above)

DESCRIPTION	QUANTITY	UNIT	UNIT COST	TOTAL
Traffic Signal and Pedestrian Safety Improvements (40th Street and Meridian Street)	1	LS	\$ 225,000.00	\$ 225,000.00
Pedestrian Safety Improvements (40th Street and Illinois Street)	1	LS	\$ 50,000.00	\$ 50,000.00
Pedestrian Safety Improvements (39th Street and Illinois Street)	1	LS	\$ 60,000.00	\$ 60,000.00
Pedestrian Safety Improvements (39th Street and Meridian Street)	1	LS	\$ 40,000.00	\$ 40,000.00
Resurfacing Meridian Street (40th Street to 39th Street)	1	LS	\$ 165,000.00	\$ 165,000.00
Resurfacing Illinois Street (40th Street to 39th Street)	1	LS	\$ 200,000.00	\$ 200,000.00
Resurfacing 40th Street (Meridian St to Illinois St)	1	LS	\$ 80,000.00	\$ 80,000.00
Resurfacing 39th Street (Meridian St to Illinois St)	1	LS	\$ 80,000.00	\$ 80,000.00
				\$ 900,000.00
General Conditions (5%)			\$	45,000.00
Mobilization/Demobilization (5%)			\$	45,000.00
Contingency (20%)			\$	180,000.00
OFF PROPERTY IMPROVEMENT TOTAL				\$ 1,170,000.00

- Perimeter Improvements and Associated Work (\$710,000)**
- Dog Park and Associated Work (\$360,000)**
- Offsite Pedestrian Improvements, Roadway Improvements, Signal Work and Associated Work (\$1.17 Million, By Others)**
- Playground and Associated Work (\$1 Million)**
- Cafe, Stage and Spray Plaza and Associated Work (\$4.9 Million)**
- Market Shelter, Plaza, Open Lawn and Associated Work (\$2 Million)**
- Basketball Court and Associated Work (\$460,000)**







YOU ARE INVITED!

You have been identified by Indy Parks and the Master Plan Team as a local resident to participate in the development of a Master Plan for Tarkington Park. The park, named after famed local author, Booth Tarkington, is located in Butler-Tarkington Neighborhood at 45 West 40th Street. We are inviting you to an open public session to share your ideas and opinions on the park. The session will be held in the Club Room of North United Methodist Church located at 3808 N. Meridian Street, July 10th from 3:30-4:30pm.

Background and Process:

This master planning process is to formally update the 1987 Indy Parks Master Plan for Tarkington Park and to provide guidance to the City of Indianapolis and Indy Parks for future improvements to the park. Since 1987, there has been growing interest in what the park could become. Most recently, Midtown led a series of visioning sessions in 2010 and developed some conceptual ideas for the park. Indy Parks and the Master Plan Team have been in close coordination with Midtown and are aware of all input and ideas generated during the visioning sessions. This master planning process is to continue the momentum started by Midtown and gather further input toward the development of a formal master plan.

What to Expect:

The master planning process will include a series of stakeholder group and public input sessions on Tuesday, July 10th. Members of the public are invited to give their opinions on the park at 3:30pm. The session will be on a first-come, first-serve basis and members of the public will be asked to sign-in to be on the list of speakers. Individuals will be given a maximum of 2 minutes to provide the master plan team with their thoughts, hopes and dreams for the park space. Input received will be documented and used by the Master Plan Team to inform the development of design concepts. These concepts will be presented back to the project stakeholders and members of the public on July 13th at 1pm in the Fellowship Hall of North United Methodist Church. If you can not participate, visit www.indyparks.org for ways to give your input or contact Andre Denman with Indy Parks at andre.denman@indy.gov or 317-327-5725.

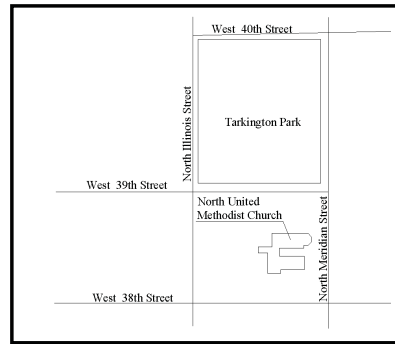
How to Prepare:

Participants are encouraged to visit the park and think about the following questions:
 What do you like about the park today?
 What is missing in the park?
 What existing features of the park should remain?
 What features and activities would you like to see in the park?
 Describe your ideal visit to the park.
 What should the park look like in 20 years?

Thank you and we look forward to seeing you on July 10th, 2012 at 3:30pm!

Sincerely,

Indy Parks
 Rundell Ernstberger Associates



Questions? Please contact Andre Denman ~ Principal Parks Planner Indy Parks (317) 327-5725 or at andre.denman@indy.gov



Indy Parks and Recreation
 200 E. Washington St. Suite 1868
 Indianapolis, IN 46204
Live. Learn. Explore.
www.indyparks.org

origin | INDIANAPOLIS

email | reindy@reasite.com internet | www.reasite.com

design workshop schedule

meeting date: July 10th-13th, 2012
 meeting time: Varies – See Schedule
 meeting location: Varies – See Schedule
 project number: 1255
 project name: **Tarkington Park Master Plan**

DAY ONE | Tuesday, July 10th, 2012 | North United Methodist Club Room

12:00 pm – Arrive, set-up space and prepare for Stakeholders

1:00 pm – Stakeholder Group One (Park Property Neighbors)

- MLK Community Center
 - Joni Collins, Executive Director
 - Tawanna Lewis
- North United Methodist
 - Darren Cushman Wood, Senior Pastor
 - Brian Williams, Outreach Pastor
- Tarkington Tower
 - George Wildman, Board of Directors
- 40 North Tower
 - Jean Dugan, President of the Home Owners Association

1:30 pm – Stakeholder Group Two (Community Groups)

- Midtown
 - Deborah Stoll, Deputy Director
 - Michael McKillip, Maple Road
- Meridian-Kessler Neighborhood Association
 - Caroline Farrar, Executive Director
 - Judy Goldstein, Board President
- Butler-Tarkington Neighborhood Association
 - Jeremy Stewart (A2S04), Board President
- Meridian Street Foundation
 - Sheila Little, Board President
- Mapleton-Fall Creek Development Corporation
 - Joni Collins will represent MFCDC in 1pm session
- Watson-McCord/Historic Watson
 - Martha Baker-Blue, Board President
- Crown Hill Development Corporation
 - Reverend Solomon

618 E. MARKET STREET INDIANAPOLIS, INDIANA 46202 [317] 263.0127 FAX: [317] 263.2080
 MUNCIE OFFICE: TE [765] 747.9737 FX [765] 747.5053
 LOUISVILLE OFFICE: TE [502] 561.8676 FX [502] 561.9076

Schedule Page One

origin | INDIANAPOLIS

email | reindy@reasite.com internet | www.reasite.com

design workshop schedule

2:00 pm – Stakeholder Group Three (Potential Partners)

- IMA
 - Mark Zelonis, Director of Environmental & Historic Preservation
 - Cynthia Rallis, Director of Development (unconfirmed)
- Butler University
 - Benjamin Hunter (City County Councilor), Chief of Staff (unconfirmed)
 - Richard Michal, Campus Engineer
- Children's Museum
 - Anthony Bridgeman, Mid-North Plan & Director of Community Initiatives (unconfirmed)
 - Karen Miller, Mid-North Plan & Community Organizer (unconfirmed)
- State Fair Grounds
 - Cindy Hoye, Executive Director
- CICF
 - Alphons Van Adrichem, Community Director
- Indiana Landmarks
 - Marsh Davis, Executive Director

2:30 pm – Stakeholder Group Four (City Employees)

- Public Safety
 - Paul Ciesielski, Captain- North District
 - Dale Braun, Lieutenant – North District
- DPW
 - Andy Lutz, Chief Engineer (Unconfirmed)
- Indy Parks
 - John Williams, Director of Indy Parks
 - Will McClendon, Senior Park Manager
- Economic Development
 - Michael Huber, Deputy Mayor
 - Kris Butler, Deputy Director – Bond Band
- DMD
 - Kathleen Blackham – Rezoning Specialist (worked with Midtown)

3:00 pm – Stakeholder Group Five (Elected and Appointed Officials)

- Mayor's Office
 - Ryan Vaughn, Chief of Staff (former City County Councilor for MKNA area)
 - Olgen Williams, Deputy Mayor of Neighborhoods (unconfirmed)
- City County Council
 - John Barth, At Large City County Councilor
 - Monroe Gray, District 8 & Parks Committee (unconfirmed)
 - Joe Simpson, District 9 (unconfirmed)
 - Will Gooden District 3 (unconfirmed)
 - William Oliver, District & Parks Committee (unconfirmed)
 - Maggie Lewis, President & District 7
- Parks Board
 - Joe Wynns, Parks Board Member & Former Director of Indy Parks

3:30 pm – Open Public Session (2 minutes max per person)

4:45 pm – Tear Down

5:00 pm – Church Closes – End of Day

618 E. MARKET STREET INDIANAPOLIS, INDIANA 46202 [317] 263.0127 FAX: [317] 263.2080
 MUNCIE OFFICE: TE [765] 747.9737 FX [765] 747.5053
 LOUISVILLE OFFICE: TE [502] 561.8676 FX [502] 561.9076

Schedule Page Two

origin | INDIANAPOLIS

email | reindy@reasite.com internet | www.reasite.com

design workshop schedule

DAY TWO | Wednesday, July 11th, 2012 | Rundell Ernstberger Associates Office

8:00 am – What We Heard Session (Indy Parks and Design Team)

9:00 am – Big Ideas and Conceptual Brain-Storming Session

10:00 am – Begin Concept Production

12:00 pm – Working Lunch

1:00 pm – Present Concepts (Indy Parks and Design Team)

2:00 pm – Concepts are selected, production work begins

5:00 pm – Working Dinner – Review of progress –

?? pm – End of Day

DAY THREE | Thursday, July 12th, 2012 | Rundell Ernstberger Associates Office

8:00 am – Continue production

12:00 pm – Working Lunch & Review (Indy Parks with Design Team)

1:00 pm – Continue production

5:00 pm – Working Dinner – Outline Presentation

?? pm – End of Day

DAY FOUR | Friday, July 13th, 2012

8:00 am – Continue presentation production | Rundell Ernstberger Associates Office

11:00 am – Arrive, Set-up Room and Test Presentation | North United Methodist Fellowship Hall

12:00 pm – Working Lunch and Presentation Run Through | North United Methodist Fellowship Hall

1:00 pm – Present Concepts to the public | North United Methodist Fellowship Hall

2:00 pm – Open up for group discussion or input | North United Methodist Fellowship Hall

3:00pm – Tear down and End of Day | North United Methodist Fellowship Hall

618 E. MARKET STREET INDIANAPOLIS, INDIANA 46202 [317] 263.0127 FAX: [317] 263.2080
 MUNCIE OFFICE: TE [765] 747.9737 FX [765] 747.5053
 LOUISVILLE OFFICE: TE [502] 561.8676 FX [502] 561.9076

Schedule Page Three

NAME	ORGANIZATION
George Wildman	Tarkington Tower at 40 NORTH ON INFERIOR
JEAN DUGAN	
Sheila P. Little	MERIDIAN STREET FOUNDATION, PRESIDENT
Deborah Stoll	Midtown
Jeremy Stewart	BTNA
Jim GREENTON	MKNA
Brian Williams	NORTH VHC

Input Session One

NAME	ORGANIZATION
George Wildman	Tarkington Tower at 40 NORTH ON INFERIOR
JEAN DUGAN	
Sheila P. Little	MERIDIAN STREET FOUNDATION, PRESIDENT
Deborah Stoll	Midtown
Jeremy Stewart	BTNA
Jim GREENTON	MKNA
Brian Williams	NORTH VHC

Input Session Two

NAME	ORGANIZATION
George Wildman	Tarkington Tower at 40 NORTH ON INFERIOR
JEAN DUGAN	
Sheila P. Little	MERIDIAN STREET FOUNDATION, PRESIDENT
Deborah Stoll	Midtown
Jeremy Stewart	BTNA
Jim GREENTON	MKNA
Brian Williams	NORTH VHC

Input Session Three

NAME	ORGANIZATION
George Wildman	Tarkington Tower at 40 NORTH ON INFERIOR
JEAN DUGAN	
Sheila P. Little	MERIDIAN STREET FOUNDATION, PRESIDENT
Deborah Stoll	Midtown
Jeremy Stewart	BTNA
Jim GREENTON	MKNA
Brian Williams	NORTH VHC

Input Session Four

NAME	ORGANIZATION
George Wildman	Tarkington Tower at 40 NORTH ON INFERIOR
JEAN DUGAN	
Sheila P. Little	MERIDIAN STREET FOUNDATION, PRESIDENT
Deborah Stoll	Midtown
Jeremy Stewart	BTNA
Jim GREENTON	MKNA
Brian Williams	NORTH VHC

Input Session Five

NAME	ORGANIZATION
George Wildman	Tarkington Tower at 40 NORTH ON INFERIOR
JEAN DUGAN	
Sheila P. Little	MERIDIAN STREET FOUNDATION, PRESIDENT
Deborah Stoll	Midtown
Jeremy Stewart	BTNA
Jim GREENTON	MKNA
Brian Williams	NORTH VHC

Input Session Six

NAME	ORGANIZATION
George Wildman	Tarkington Tower at 40 NORTH ON INFERIOR
JEAN DUGAN	
Sheila P. Little	MERIDIAN STREET FOUNDATION, PRESIDENT
Deborah Stoll	Midtown
Jeremy Stewart	BTNA
Jim GREENTON	MKNA
Brian Williams	NORTH VHC

Concept Presentation

Name	Apt #
MERLE LAMBERT	20 J
Samuel Haggert	2 A
FRED EVANS	15 J
George Buchanan	9 G
Jeff Sumner	9 E
Michael Kelly	5 B E
Charles Thompson	6 E
Steve, Mrs. Duncan	12 G F
Steve, Mrs. Hill	9 H
Dave & Beth	9 E
Kristen	3 J
John & Lauren	14 F
John & Susan	
George F. Sires	11 F
Steven Gudock	11 A
Wells M. Anderson	8 H
MARK FULLER	8 H
Jim Olin	16 A
Janet Knall	6 A
Sasha Apple	15 H

Tarkington Tower Meeting

NAME	ORGANIZATION
Merte Lambert	Tarkington Tower
Bernie Frelchman	"
Sam Kuperstein	Double Fails
Martha Babin Blue	Watson Park
Deborah Stoll	Midtown
ADAM GARVER	NEIGHBOR
CHUCK CAGNON	MIDTOWN
Guy Russell	KAPPA ALPHA PSI FRATERNITY
Maria A. Sivar	STUART MORTUARY

Draft Master Plan Presentation

NAME	ORGANIZATION
Jane Conley	Tarkington Tower
FRANK JR ROGERS	NUM 100 ST. TASK FORCE
Mina Antonopoulos	Tarkington Tower
Ann Burkhart	Tarkington Tower
Athena Wright	Tarkington Tower
Andrew Saphier	DPZ
LEW PIWASKI	
Ben Jackson	DPZ
Dan Cowlin	INDY PARKS
FRED EVANS	TARKINGTON TOWER
Manuel Shea	Tarkington Towers
Charles & Wanda Thompson	TARKINGTON TOWER
Richard E. Hainke	"
KRIS DUNCAN	TARKINGTON TOWER
STEVE DUNCAN	"
LUCY RIEGEL	1031 BOULEVARD PX
BOB RIEGEL	"
Michael Melillo	Midtown MFC
Maureen Alexander	North Chicago Neighbor
Lyrene Burkhart	Tarkington Tower
Adam G. Van	
DRESSA BREITFIELD	MFCDC
JAMES MONTGOMERY	JVM ARCHITECTS
John Kerwin	MFC
Garretson	MKNA
Barbara Hanna	DPZ - MKNA
Tim Harmon	Neighbor
Dianne Montgomery	Watson-McLeod

Draft Master Plan Presentation

NAME	ORGANIZATION
Liam Evans	MFCDC
John BARTH	BTNA
Kay Buckman	TT Condo
Elsie Klein	MSF
Sheila P. Little	MSF
Joni Collins	MLIC
Robert O. Hill	INDY PARKS
Lois & Fitzcarrald	BTNA
Tom Gallagher	MIDTOWN
Hollen Lamb	North
Jim Baker	MIDTOWN
Darren Wood	NUMC
P. Sprugel	

Draft Master Plan Presentation

Joe,

This comes as reaffirmation of our telephone conversation today confirming strong support by Meridian-Kessler Neighborhood Association of the efforts in developing a Master Plan for Tarkington Park. Giving consideration to park elements that would answer seniors, youth and the general public seems to be a central theme in development deliberations. Retaining existing valuable assets, enlarging some, altering placement of others for convenience of use, building in new additions to draw in much greater public participation, also with thought given to adjacent business revitalization is such a worthy undertaking and a tremendous opportunity for not only the two large neighborhoods for which Tarkington Park is a gateway, but for the several near neighborhoods and the surrounding area in general.

I am here attaching the article I submitted for the current issue of the MKNA Newsletter. We would be pleased to use this publication and our website to be helpful in any way.

Judy Goldstein, president of MKNA, and I both send congratulations to you and all involved in this major effort. We look forward to being in attendance at the next scheduled meeting.

Best regards,

Caroline Farrar

Caroline Farrar
Executive Director
Meridian Kessler Neighborhood Association
526 E. 52 nd Street
Indianapolis, IN 46205
meridiankessler@aol.com
Office: 317-283-1021
Cell: 317-695-8272
Fax: 317-283-6061

**Letter of Support from Meridian-Kessler Neighborhood Association -
received on August 7, 2012**



Indianapolis Board of Parks and Recreation
Mr. John Williams, Chair
200 E Washington St.
Indianapolis, IN 46204

Dear Mr. Williams,

This letter is to indicate the strong support of Midtown Indianapolis, Inc. and its partnering neighborhood organizations for the development of Tarkington Park according to the Master Plan recently completed by Indy Parks and Rundell Ernstberger.

Midtown Indianapolis, Inc has been a partner in community planning for the past five years. In 2010 we completed the Midtown Master Plan, after 3 years of community visioning sessions. Through the planning process Tarkington Park and the surrounding area was identified as one of the 4 targeted catalyst sites in Midtown for positive growth, quality of life, and economic redevelopment. During the visioning process, residents and business owners in the radius surrounding the park provided several iterations of plans and charettes that dated back to the 1980's detailing the community's hopes for the park to become an outstanding community asset and a gathering space for all in our diverse neighborhoods.

The neighborhoods of Midtown are extremely excited and encouraged to see that Indy Parks and Rundell Ernstberger considered the previous work and listened to the community, and that the Master Plan takes into account the objectives that have been voiced over all those years. Specifically, we are very pleased to see the elements included are urban in scale and feel, yet offer appeal to people of a variety of ages. The amenities in the park are precisely those desired by residents and those needed to draw users into the park.

It is clear to us that the new design would do more than just beautify and enhance the outdoor experience available to residents. The implementation of this Master Plan offers the potential to leverage additional private investment in the surrounding underutilized developments. Potential investors in the area have indicated to us that a commitment to move forward with the park would make them more confident about undertaking business or potential mixed use projects in the area.

Most importantly, if implemented, the plan would create a truly "inspiring place" that is unique and fits with the needs, character, and design of the neighborhoods which would use it. The Indy Parks Master Plan for Tarkington Park is truly the culmination of decades and hundreds of hours of thought and planning and reflects a park Midtown, Inc. and its neighborhood partners stand ready to support in every way possible.

Sincerely,

Michael McKillip, Executive Director - Midtown, Inc
Joni Collins, Executive Director, Martin Luther King Community Center
Leigh Riley Evans, Executive Director – Mapleton Fall Creek CDC
Brooke Klejnot, Executive Director – Broad Ripple Village Association
Martha Baker Blue, President – Historic Watson McCord Neighborhood Association
Jeremy Stewart, President - Butler Tarkington Neighborhood Association
Judy Goldstein, President – Meridian Kessler Neighborhood Association
Sheila Little, President – Meridian Street Foundation

c/o Central Indiana Community Foundation • 615 N. Alabama, Suite 119 • Indianapolis, IN 46204 • midtownindy.org

**Letter of Support from surrounding community
organizations - received on November 9, 2012**

